

How to connect to FS Image Services from ArcGIS Desktop, Pro, and Online

In September 2019, the GTAC Image Services were migrated to the NITC Virtual Data Center, and with this was given a new URL address. In addition, the IP address previous used (166.2.126.54) was taken off line. The named secure URLs shown in this guide will be the sole connection to the Image Services from both ArcGIS and online resources. Users will need to update their map documents and other connections to this new URL.

Instructions for ArcGIS Pro users begin on page 4.

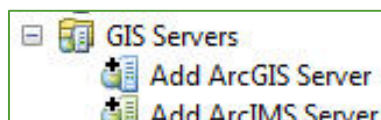
For making connections in ArcGIS Online, go to the section [“Connecting from AGOL or other web applications”](#) on page 5.

Connect using ArcCatalog

1. Launch **ArcMap**.
2. If needed activate Catalog by either clicking on **Windows | Catalog** or by clicking on the Catalog icon in the main toolbar (see below).

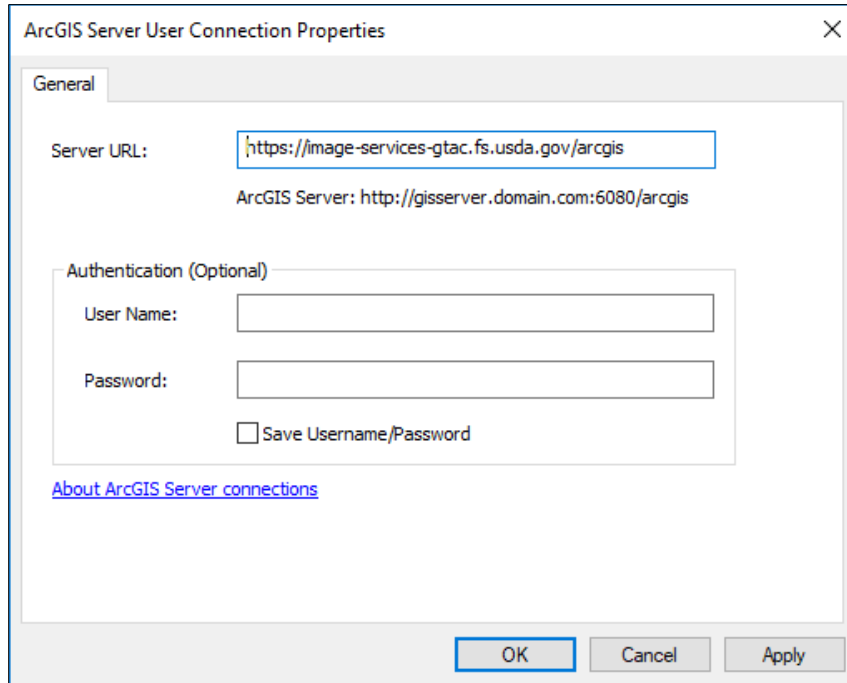


3. Dock the toolbar if desired.
4. Find the **GIS Servers** item, and click the plus sign next to it to expand the list.
5. Double-click on **Add ArcGIS Server** (see below).

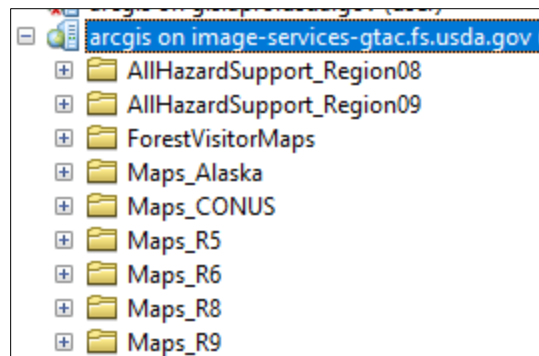


6. In the box next to Server URL:, type (or copy and paste) the following address:
https://image-services-gtac.fs.usda.gov/arcgis

7. Leave the **User Name** and **Password** boxes blank, and click **OK** (see below).



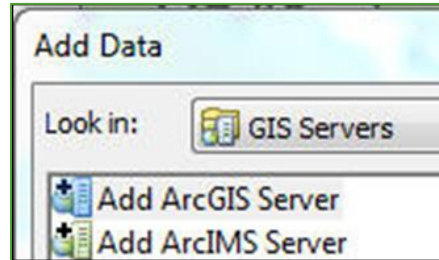
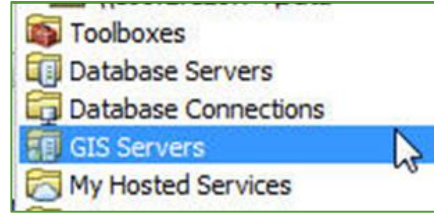
8. The service will be added to the list under GIS Servers.
9. Expand the lists by clicking on the plus signs to see the available data (see below).



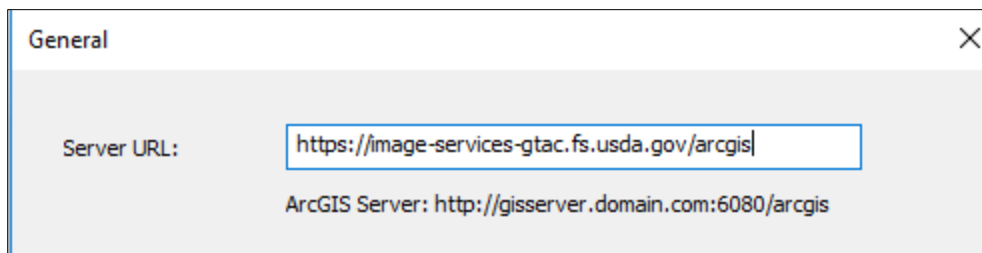
10. To add a service to your map, simply click-and-drag the service to your map window or Table of Contents.

Connect Using Add Data in ArcMap

1. Click on the **Add Data** button, or right-click on **Layers** in the Table of Contents and choose **Add Data**.
2. Next to **Look in**, click on the drop down and select **GIS Servers** (see below).

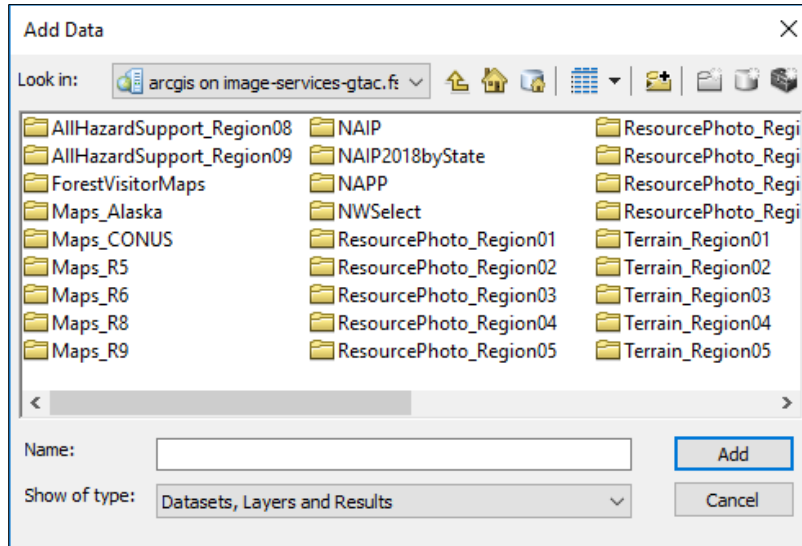


3. In the list, double-click on **Add ArcGIS Server** (see below).
4. Ensure that **Use GIS Services** is selected, and click on **Next >**.
5. In the box next to Server URL (see below), type (or copy and paste) the following address: **https://image-services-gtac.fs.usda.gov/arcgis**



6. Leave the User Name and Password boxes blank, and click **Finish**.
7. The server **arcgis on image-services-gtac.fs.usda.gov/arcgis (user)** will be added to the list. Double click on it.

- The list of services will now appear in the Add Data dialog (see below.) To see what is available in a folder, double-click it. To move up a level, click on the **Up One Level** tool to the right of the Look in drop down.

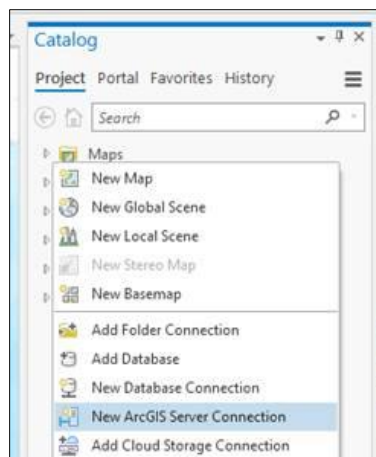


- To add the desired service, click on it then click on **Add**.

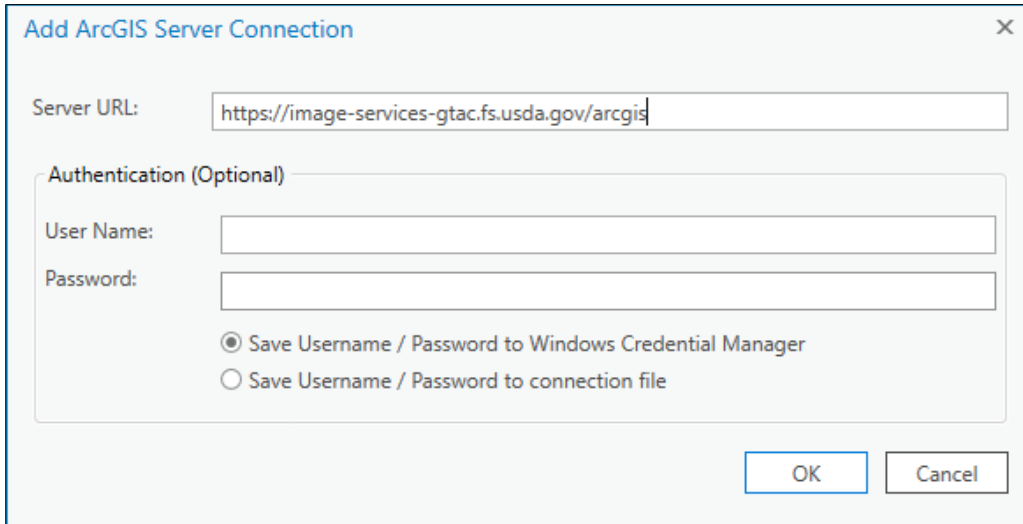
The server will now be available below **GIS Servers** in the Look in drop down until you remove it.

Connect from ArcGIS Pro

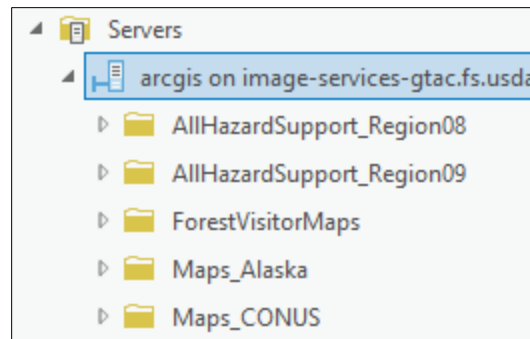
- Launch **ArcGIS Pro**, and open or begin a project
- If necessary, open the Catalog pane
- Anywhere in the blank part of the pane, right click, and select **New ArcGIS Server Connection**



- In the box next to Server URL (see below), type (or copy and paste) the following address: **https://image-services-gtac.fs.usda.gov/arcgis**:



- The image server connection should appear in the Servers group. Expand the list by double clicking on the server name or clicking on the triangle to the left of the name. You can expand individual folders the same way.

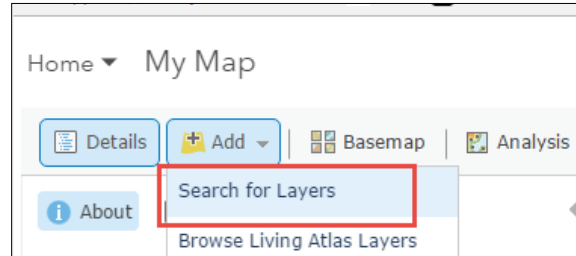


Connecting from AGOL or other web applications

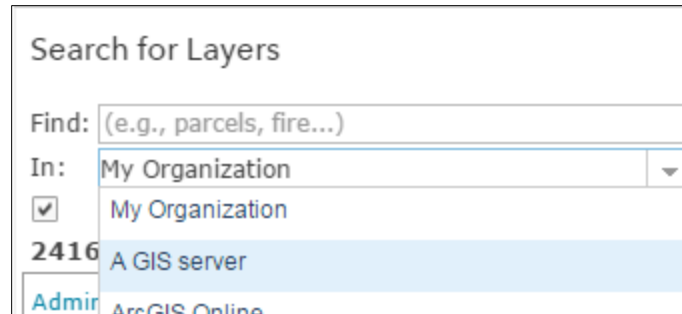
In order to access the Forest Service Image Services, you must have a FS ArcGIS Online Account. The account name is typically your FS short name with ‘_usfs’ appended at the end. For information on how to obtain one, go to the [FS AGOL SharePoint page](#).

- Navigate to **arcgis.com**, and sign in with your ‘usfs’ credentials.
- Open an existing Map, or start a new one.

- On the left side of the page, click on the **Add** dropdown, then choose **Search for Layers** (see below).



- To the right of **In** at the top of the window, click on the dropdown and select **A GIS server** (see below).



- In the box next to URL, type or copy/paste the following: **<https://image-services-gtac.fs.usda.gov/arcgis/rest/services>**
- The services available from GTAC will appear in the list. Find those you are interested in and click on the **Add** link. Continue to use AGOL.