



EXERCISE 3

Exporting and Printing from the Services

Introduction

You can export a limited amount of raster data from the Image Services and the RDW (but not map services).

Imagery services can make very useful backdrops for both large format prints as well as map series such as plots for field work. However, printing with image services is not as straightforward as if the imagery is stored on your local hard drives. This exercise will explain how it's done.

Objectives

- Export data from the Services
- Use the Services for a map backdrop and print it.

Prerequisites

- You should already have a connection to Image Services in ArcMap (Exercise 1)

Table of Contents

Part 1: Export Data from the Services..... 2

Part 2: Print Maps from the Services 3



Part 1: Export Data from the Services

The Export Data tool in ArcGIS enables you to export a limited amount of raster data from the Services.

1. Add a raster layer from the Services to the ArcMap Table of Contents.

*Make sure the layer is a raster image service and **not** a vector map service. You can know what kind of service it is by the icon next to the layer name in Catalog or Add Data.*

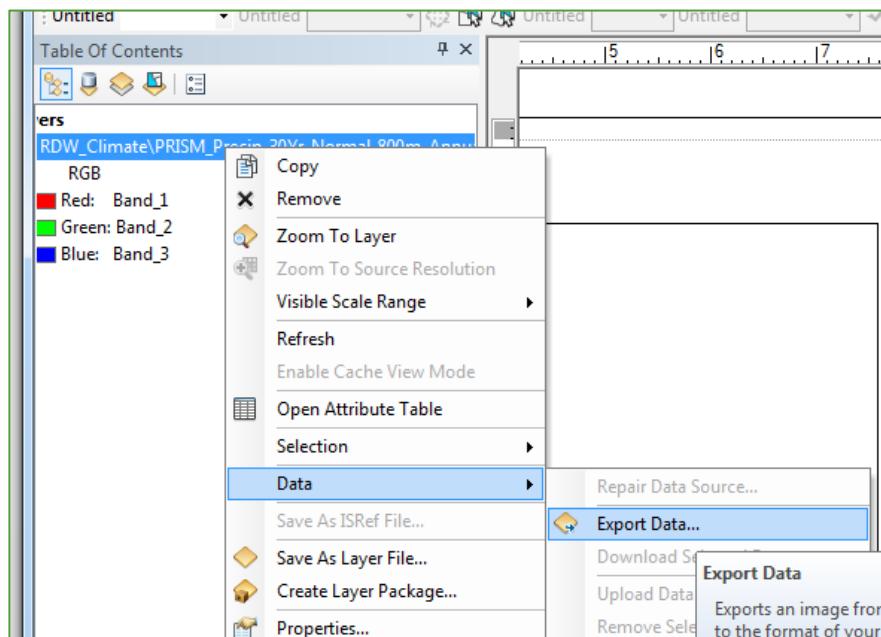


= Image Service

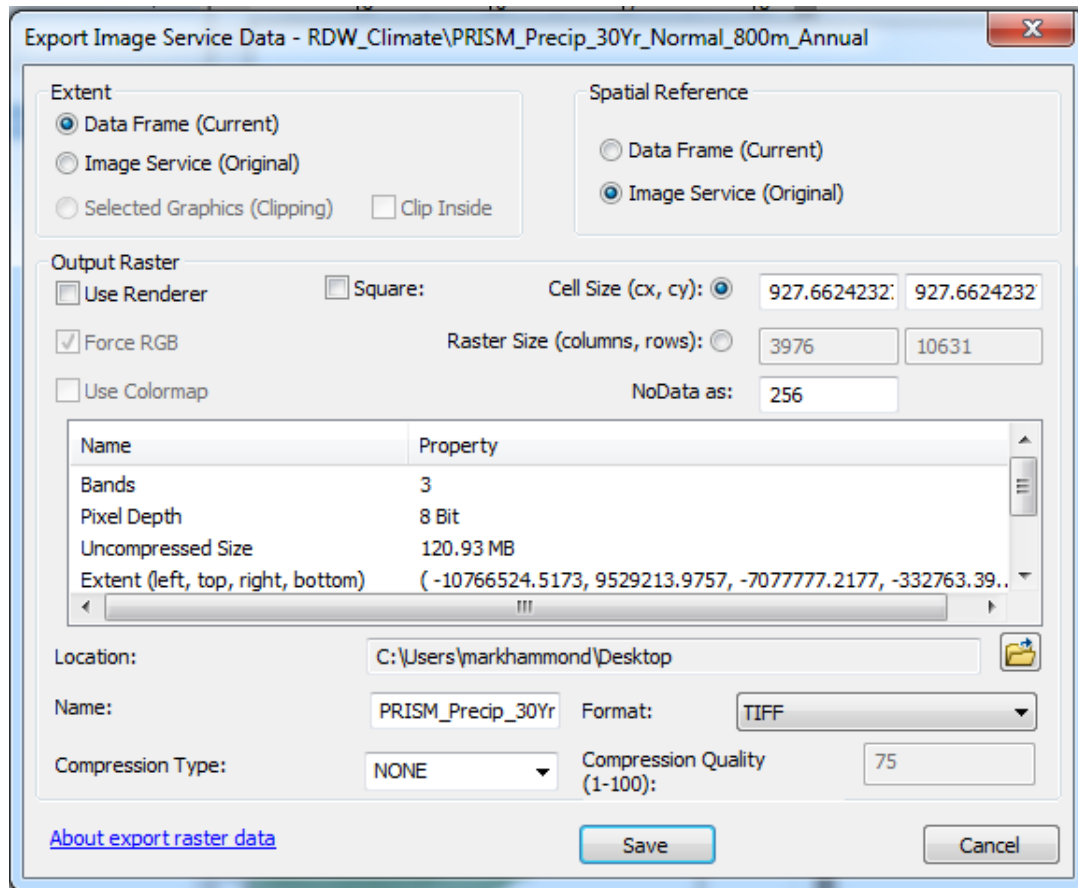


= Map Service

2. In the Table of Contents, right click the layer then choose **Data | Export Data** (see below).



3. In the Export Image Service Data dialog, make sure the **Extent** is set to **Data Frame** (see below).



- i. Be aware that the Services have a data **size limitation** for exporting data. With the default cell size, only areas less than about **4000 acres (1:20,000 scale)** can be exported. You can export larger areas if you increase the cell size. If you need imagery covering more than about 4000 acres at its original resolution then you'll need to utilize one of the other geospatial data outlets shown in the tutorial.

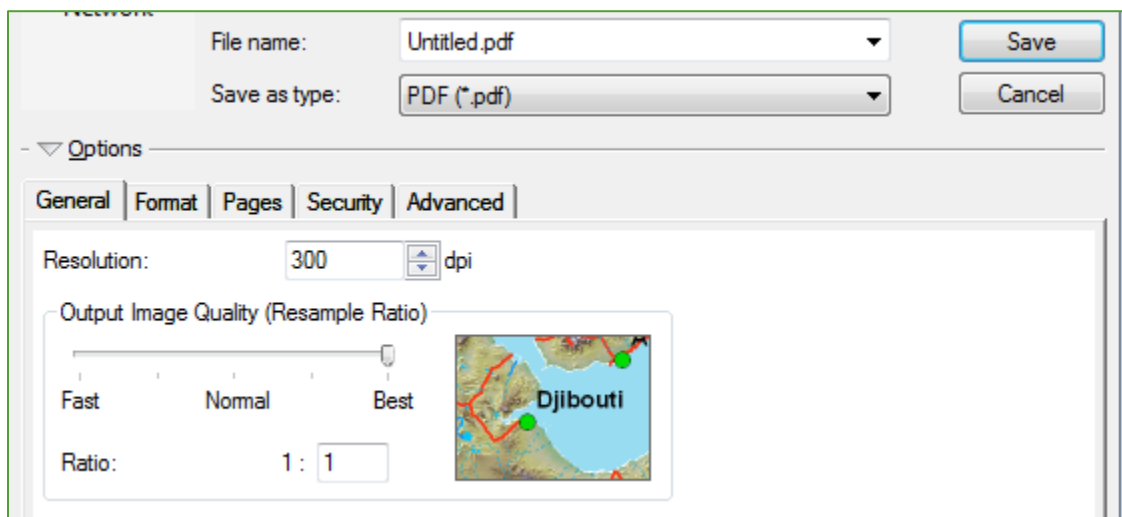
4. Set any other parameters you need and then click **Save** to export the data.

Part 2: Print Maps from the Services

Use these steps to print using imagery from the Services. Note that some experimentation may be required to find the best quality for your printing purposes.

1. Make sure there is a layer from the Services in the Table of Contents. It can be either an image service or map service.
2. In the main toolbar, click **View | Layout View**.
3. Prepare your map in Layout as you normally would.

4. Right-click on the service in the Table of Contents, and ensure the **cache is turned off**.
5. Export your map by clicking **File | Export Map...**
6. In the Export Map dialog, set the **Save as type** field to **PDF** (see below).



7. In the **Options** section in the bottom of the dialog, click on the **General** tab if needed
8. Try the following combinations. These were found to be the maximum ranges for each output quality for high resolution (40 cm) imagery at a scale of 1:24,000; you may want to experiment some with your own system and data:
 - i. For an Output Image Quality of **Normal**, use a maximum Resolution of **550 dpi**
 - ii. For an Output Image Quality of **High**, use a maximum Resolution of **350 dpi**
 - iii. For an Output Image Quality of **Best**, use a maximum Resolution of **150 dpi**
9. Click on **Save** to save the PDF, and then open the file to inspect the quality. When you are satisfied with the result, **print** your map.