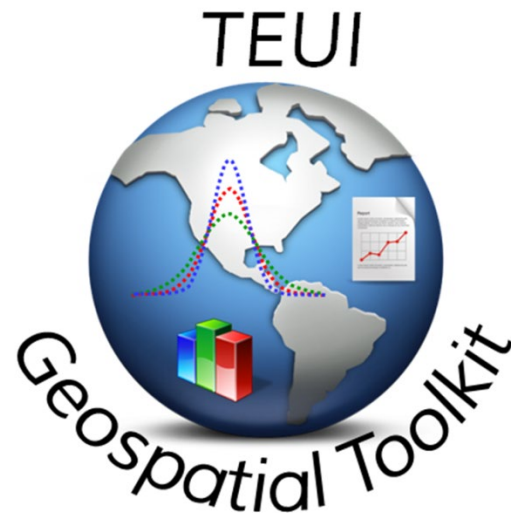




Installing the Toolkit



The Toolkit is an ArcGIS Add-in that is compatible with ArcGIS 10.0 and above. Please see the Toolkit website (<https://www.fs.usda.gov/about-agency/gtac/teui>) for previous versions compatible with ArcGIS 9.3 and below (versions 3.2 and 4.1 of the Toolkit are not recommended).

What are the computing requirements to install and use the TEUI Geospatial Toolkit?

- Windows XP or Windows 7 operating system
- ArcGIS 10.0 and above
- ArcGIS Spatial Analyst Extension
- At least 4 GB RAM space to run the TEUI Geospatial Toolkit Statistics. More memory may be needed depending on the project size.

How do I download the Toolkit ArcGIS Add-In?

The TEUI Toolkit ArcGIS Add-In for ArcGIS 10.0 and above can be downloaded from the following web address: <https://www.fs.usda.gov/about-agency/gtac/teui>

The Toolkit can be used within the Forest Service Enterprise GIS Citrix environment. However, the Toolkit can **NOT** be used with ArcSDE connections at this time.




Contents

A. Install the toolkit ArcGIS Add-In	3
B. Load the Toolkit in Citrix	4
C. Load the Toolkit Toolbar in ArcMap	6
D. Set directories for the Toolkit in Citrix.....	7
E. Check the toolkit version and setting processing and memory parameters	8
F. Set the temporary working directory.....	9

A. Install the toolkit ArcGIS Add-In

1. First, be sure that ArcMap is **not** open or running. Also, remove any previous versions of the TEUI Toolkit installed on your PC by using the Add-In manager in ArcMap (**Customize | Add-In Manager**). Under **My Add-Ins** click **TEUI.Addin** then click **Delete this Add-In**.
2. In **File Explorer** navigate to **Documents -> ArcGIS -> AddIns** and browse through the **Desktop 10.x** folders to ensure that an old TEUI Toolit version doesn't exist. You will have to open each folder to verify whether it contains the **teui.addin.esriaddin** file (below). If it is present, delete it. Only delete files with the name **teui.addin.esriaddin**, as esri addin files with a different name are other addins you have previously installed.

Name	Date modified	Type	Size
{DC88A345-938F-4870-8257-913627E80C73}	4/1/2019 2:37 PM	File folder	



Name	Date modified	Type	Size
teui.addin.esriaddin	4/1/2019 2:37 PM	Esri AddIn File	253,619 KB

- You can also use the Control Panel in Windows to delete the Add-In.

3. On the TEUI Toolkit website scroll down to the **Downloads** section (see below), click the **Zipfile, 362MB** link for TEUI Toolkit 5.8 and save it to a location of your choice.

Downloads

[TEUI Geospatial Toolkit 5.8](#)

TEUI Toolkit 5.8

ArcMap 10.5 Add-In installation package. TEUI Toolkit 5.8 is only compatible with ArcGIS versions 10.5 and above. Requires ArcGIS Spatial Analyst extension. [Zipfile, 362MB](#).

Download Instructions

When downloading the Toolkit, ensure you download the entire zipfile by clicking the 'Download' button at the top right corner of the page. Do not download the add-in file individually using the '...' button.

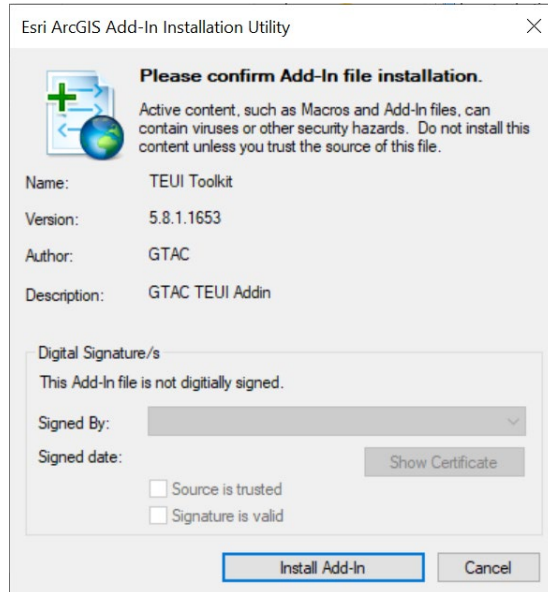
TEUI Toolkit 5.8 User Guide

Provides instructions for software installation and use. [PDF, 3.1MB](#).

4. Once the download is complete, navigate to the location of the saved Add-In, double click on the compressed folder (**do not** unzip the folder), and then double click on the Toolkit Add-In.

In order to install the Add-In, ArcMap must not be open or running.

5. When prompted, select **Install Add-In** (see below).

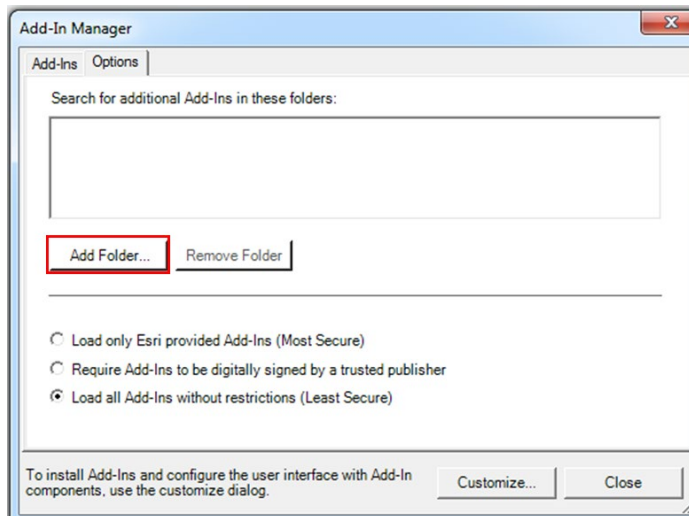


6. Click **OK** once the installation has succeeded.

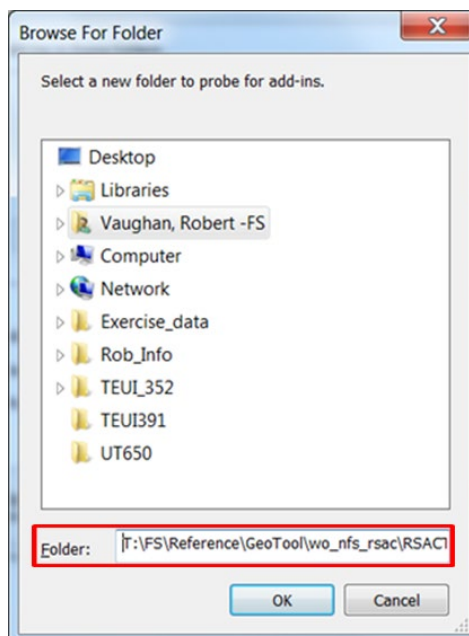
B. Load the Toolkit in Citrix

Ignore this section if you have ArcGIS on your desktop

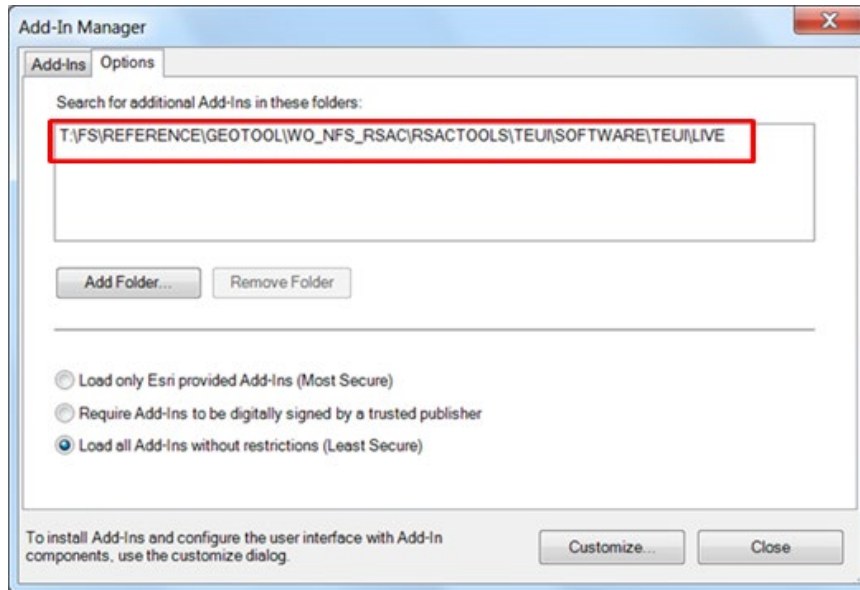
1. In ArcMap, select **Customize | Add-In Manager** from the top menu bar.
2. Select the **Options** tab in the Add-In Manager dialog.
3. In the **Options** window, select **Add Folder....**(see below)



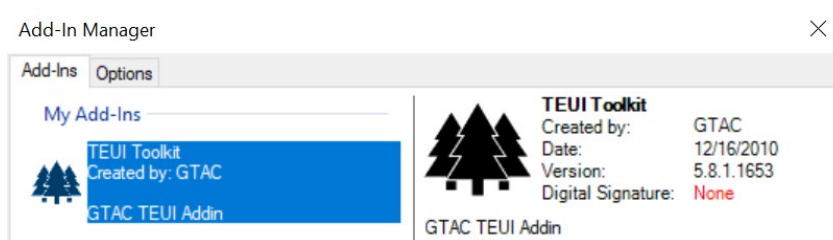
4. In the Browse For Folder dialog, enter:
T:\FS\Reference\GeoTool\wo_nfs_rsac\RSACTools\TEUI\Software\TEUI\live in the bottom Folder space and click **OK**. (see below).



5. You should now see the address listed in the “**Search for additional Add-Ins**” window (see below).



6. Click once on the TEUI Add-In (see below).



7. Click **Close** when finished.

If you double-click the Add-In and the computer tries to open it with Adobe or a program besides ArcGIS that means you don't have ArcGIS installed on your local desktop computer. If so, follow the instructions below about how to load the Toolkit in Citrix.

C. Load the Toolkit Toolbar in ArcMap

Once you have installed the Toolkit, you may have to activate it for it to appear on your screen in ArcMap.

1. Start ArcMap.
2. Click on **Customize | Toolbars** and click on **TEUI**. The Toolkit Toolbar should appear on your screen (see below).

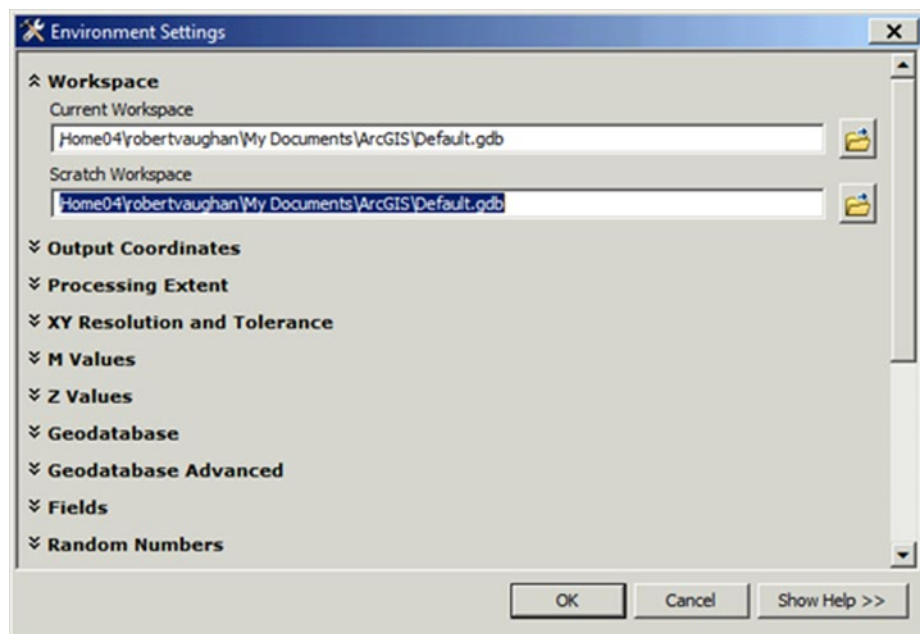


3. Drag and drop the toolbar to a location of your choice.

D. Set directories for the Toolkit in Citrix

Ignore this section if you have ArcGIS on your desktop.

1. Make sure the Workspace paths in ArcGIS **do not have any spaces between characters**.
 - i. On the ArcGIS main menu, click **Geoprocessing | Environments | Workspace**.
 - ii. Notice default location example below which has a space in the path section “My Documents”.
 - iii. If the **Current** and **Scratch Workspace** path has any spaces between characters, change the path to one that doesn't. The path should also go to a directory where the disk space quota is large enough for what you are working on (see below).

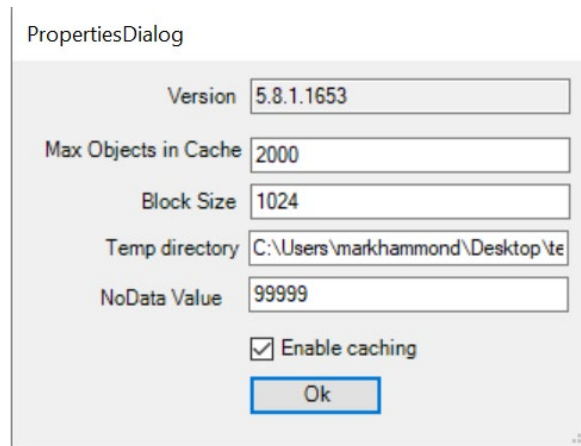


2. Using ArcCatalog or Windows Explorer within Citrix, make a **project folder** for toolkit statistics in a preferably a **local** forest\region project folder or in **T:\datacenter\citrix\AppDataXX\<username>** directory.
3. Using ArcCatalog or Windows Explorer within Citrix, make a **temporary processing folder** (**must be separate from the project folder, and not within the project folder**) preferably a **local** forest\region project folder or in **T:\datacenter\citrix\AppDataXX\<username>** directory. The Toolkit can't automatically set this in the Citrix environment as we do in the desktop environment so it is up to the user to select an appropriate location for the temporary folder.

4. Click on the sprocket (**TEUI Properties** button) on the right end of the Toolkit Toolbar (see below).



5. In the TEUI Properties dialog, click on the blank **Temp Directory** field. Set this path to the temp directory created in Step 3 above. Note: Temp directory is initially blank because it isn't automatically set by the program in Citrix (see below).



E. Check the toolkit version and setting processing and memory parameters

1. If the Properties Dialog is not already open, click on the sprocket (**TEUI Properties** button) near the right end of the Toolkit Toolbar.
 - i. The Toolkit version that is currently installed is shown at the very top of the dialog box.
 - ii. Users can modify the **Max Objects in Cache** parameter which is a dynamically scaled value that depends on how much memory the Toolkit application is using. Users can use this value to limit the amount of memory the application is using. (**Changing this value is not recommended**).
 - iii. Users can also modify the **Block Size** parameter to control how much memory can be used by the program. A larger block size speeds up processing, but requires more memory. (**Changing this value is not recommended**).

*If the toolkit doesn't seem to be updating, try clearing the add-in cache on your local machine. Go to **C:\Users\user name\AppData\Local\ESRI\Desktop10.x\AssemblyCache**. In the AssemblyCache folder will be a folder for each add-in ArcMap has loaded. The folders are named with a long alpha-numeric that won't make any sense, but if you click into these folders you will see .dll, .pdb, and .xml files that have the same name as the add in. Delete the folder within the AssemblyCache folder that holds the add-in you want to be updated properly, and restart ArcMap. Note that a few of these folders you need to click through are hidden, so you'll have to make sure you can see hidden folders.*

F. Set the temporary working directory

1. If the Properties Dialog is not already open, click on the sprocket (**TEUI Properties** button).
 - i. The toolkit will automatically set the Temporary working directory but you can modify it. Your temporary directory should not be located in your project folder. If you are working in Citrix, make sure you follow steps **D 3-5** of this document.
 - ii. Click anywhere in the Temp directory entry space and a navigation pane will open. Navigate to the directory (folder) of your choice and click **Ok** (see below).

