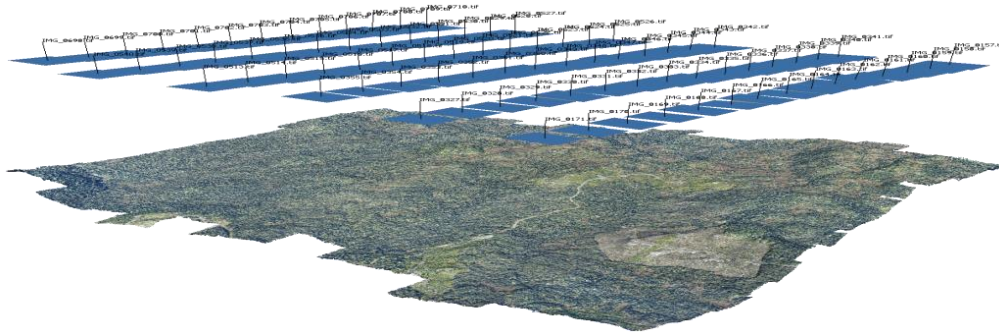


# Metashape Installation Guide

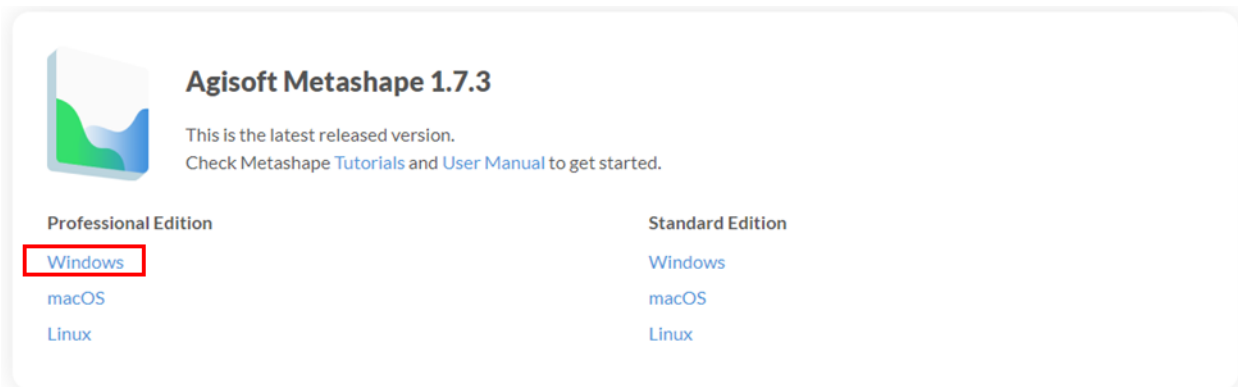


## Overview

This document will guide you through the process of downloading and installing Agisoft Metashape Professional, which is a software application to create 3D models, point clouds, and orthomosaics from imagery. This is a fairly light installation and should only take a few minutes to complete. The Forest Service has set up a license server to distribute the Metashape licenses. However, please be aware that a network connection (VPN works too) is required to access the license server. If you have any questions regarding Metashape licensing, please contact Dave Vanderzanden ([dvanderzanden@fs.fed.us](mailto:dvanderzanden@fs.fed.us)).

## A. Download the installation file

1. Click on the following link to go to the Agisoft Metashape website:  
[www.agisoft.com/downloads/installer](http://www.agisoft.com/downloads/installer)
2. On the Agisoft website, click on the Windows link below the **Professional Edition** (see following figure). Save the installation file (MSI) to your computer.

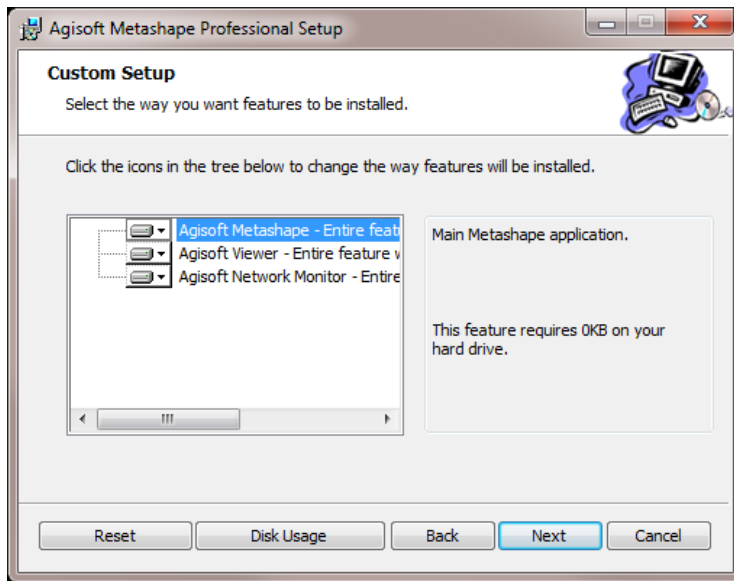


## B. Install the software

1. Navigate to the folder where you saved the installation file.
2. Right click on **Metashape-pro\_1\_X\_X\_x64.msi** and select **Install Elevated** (see following note).

**Note:** Most Forest Service computers no longer have the Run Elevated option. You may need to contact the Forest Service Help Desk if you need administrator privileges to install.

3. Select **Run** in the Security Warning window. If an “Authorize Application” window opens, enter “to install Metashape” in the justification window.
4. Select **Next** from the setup window.
5. Place a checkmark in the “I Accept terms in the License Agreement” box and then select **Next**.
6. Select **Next** again to accept the default custom setup (see following figure).

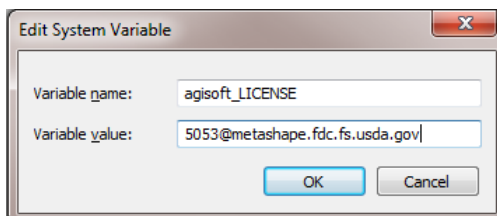


7. Accept the default destination folder by selecting **Next**.
8. Click on the **Install** button to initiate the installation.
9. After the software has installed, select **Finish** to complete the installation process.

### C. Connect to License Server

In this step, we will add a Metashape environmental variable. This will allow you to use one of the Metashape floating licenses when connected to the Forest Service network.

1. Click on the Windows **Start** button and in the *Search programs and files* field, type **variables**.
2. Select **Edit environment variables for your account**.
3. Under System variables, click on the **New** button and enter the following information (see figure below):
  - i. Variable name: agisoft\_LICENSE
  - ii. Variable value: [5053@metashape.fdc.fs.usda.gov](mailto:5053@metashape.fdc.fs.usda.gov)



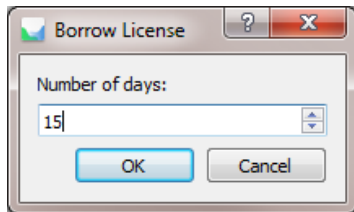
4. Click **OK** to close the windows. You should now see the Agisoft\_LICENSE variable added to the list of your system variables.
5. Open Metashape to ensure that the network license is found. If an error occurs upon opening Metashape, return to the environment variable and check for typos or extra spaces in the variable value. If issues still occur, restart your computer (see following note).

**NOTE:** If it is still not working, verify that you are connected to the Forest Service network via VPN or a direct network connection.

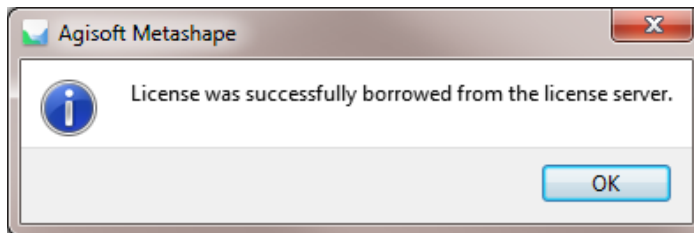
## D. Borrowing Licenses

If you anticipate that you will need to use Metashape in an area where a network connection is not available, you can borrow a Metashape license for up to 15 days. Keep in mind that there are a limited number of licenses and so only borrow a license when you absolutely need it. In order to borrow a license, you need to have completed the previous installation and license server steps and you must be connected to the FS network. Here are the steps for borrowing a license:

1. Open Metashape.
2. Click on **Help** in the main menu and select **Activate Product**.
3. In the activation window, select **Borrow License** (see following figure).



4. Enter the number of days that you need to borrow the license and select **OK** (remember that the max number of days is currently set to 15).
5. If done correctly and if a license is available to borrow, you should get the following message:



6. If you end up borrowing a license for longer than you need it or if you were just testing it out, go ahead and return the borrowed license by going back to the **Borrow License** window (Help and Activate Product) and clicking on the **Return License** button.

**SUMMARY:** In this guide, you installed Metashape, added an environment variable to connect to the license server, and learned how to borrow a Metashape license. You should now be ready to start creating some 3D models, orthomosaics, or point clouds from your imagery.