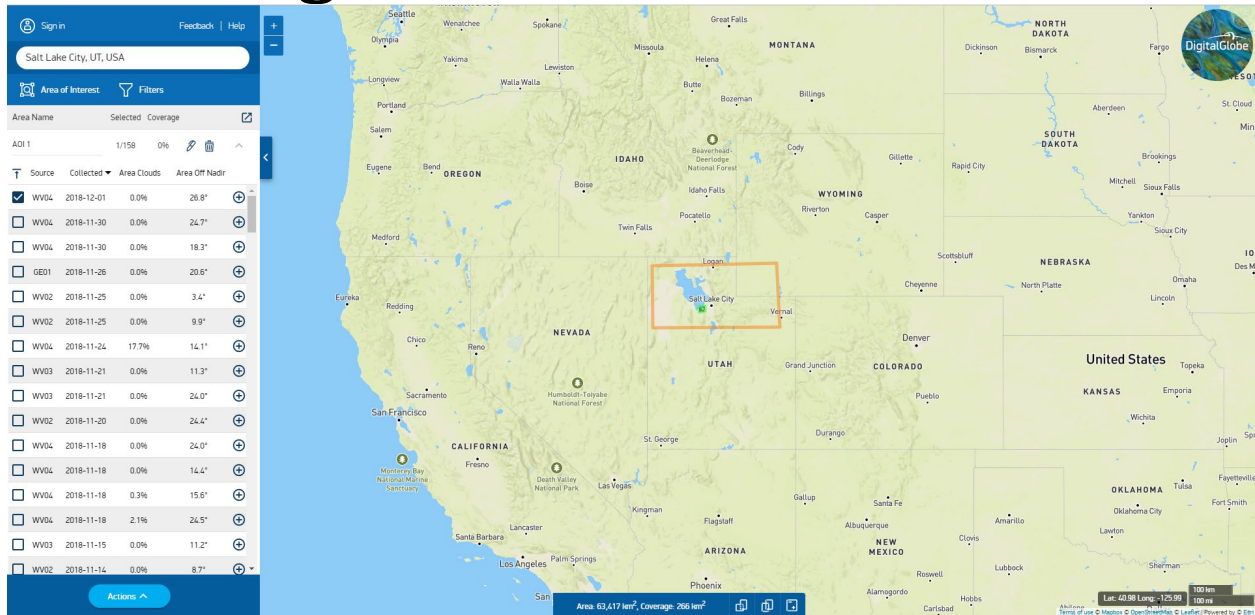




DigitalGlobe User Guide



Introduction

DigitalGlobe is a commercial provider of satellite imagery. Owners of their own constellation of satellites and sensors, they work closely with the National Geospatial Intelligence Agency. They have the ability to provide some of the highest resolution data, although the spatial resolution is reduced slightly for commercial and non-intelligence users.

Their website has an intuitive search engine, which is useful if you want to search strictly for WorldView (1-4), QuickBird, and GeoEye data availability without sorting through other sensors. Data through this site must be purchased. However, some data from this constellation are available through Earth Explorer and EnhancedView Web Hosting Service websites for free to government accounts.

Available Data:

- WorldView-1, -2, -3 and -4
- GeoEye-1
- QuickBird (decommissioned in 2015)





Table of Contents

Part 1: Finding Data 3



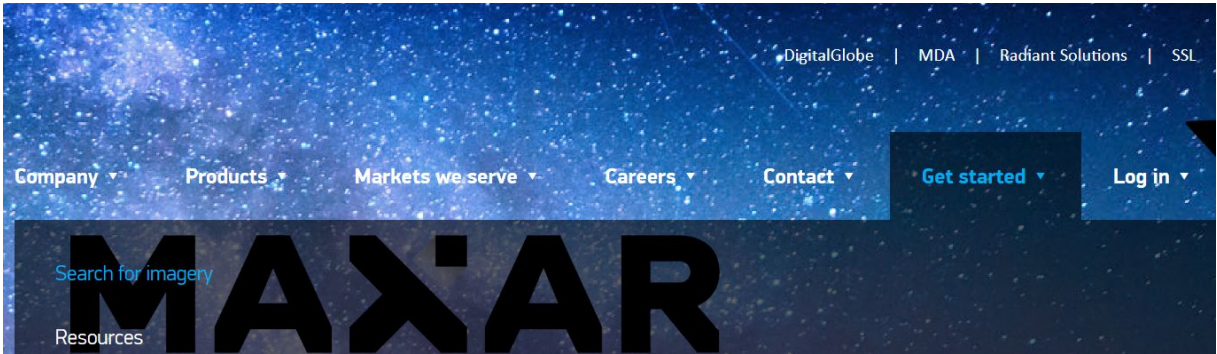
Part 1: Finding Data

A. Site Overview

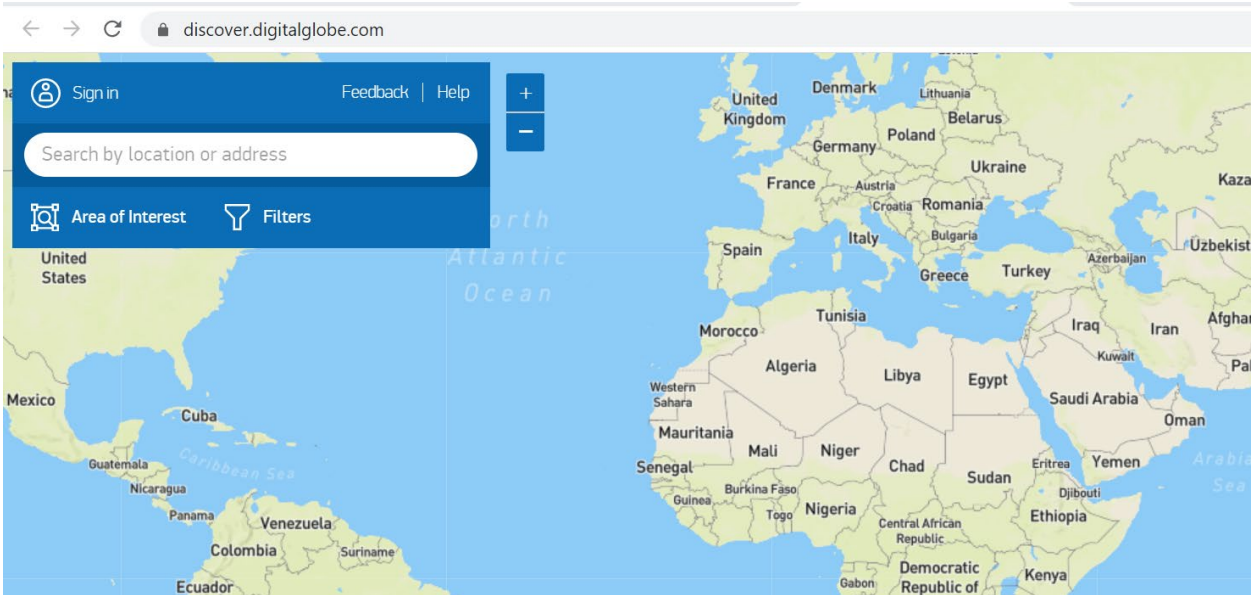
1. Follow this link to access the DigitalGlobe website: <https://www.digitalglobe.com/>

Note: Digital Globe is now part of a group of integrated space brands called Maxar Technologies.

2. In the upper right of the window, click **Get started** then click **Search for imagery**.



3. The initial view shows the entire globe in an interactive map viewer (see below). The primary tools for this interface are available in the upper left part of the window.

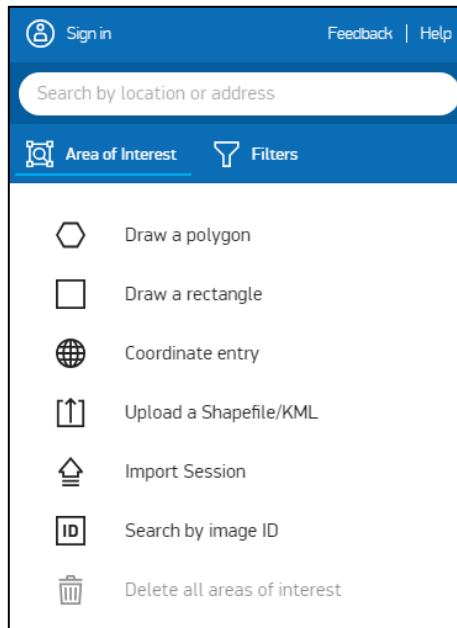


4. A Frequently Asked Question (FAQ) page provides additional instructions on how to use this interface. You can open this by clicking the **Help** button in the upper left portion of the window.

- i. To return to the map interface from the FAQ page, click **Close** at the bottom of the window.

B. Create an Area of Interest

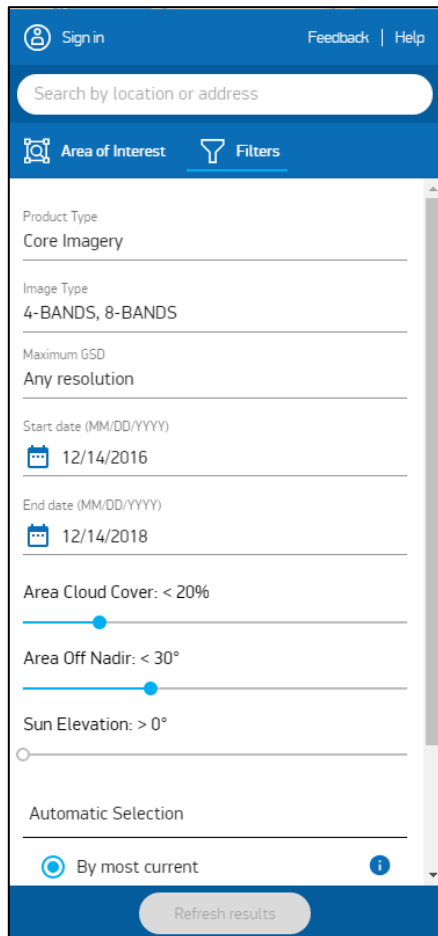
1. Click the **Area of Interest** button in the top left to see the options for defining your study area (see below).



2. Notice that there are options for drawing a polygon, drawing a rectangle, using coordinates, uploading a shapefile or KML, or searching for a specific Image ID. There is also a button for deleting areas of interest that you have already drawn.
3. You can zoom into your study area by panning around the map and using the scroll wheel on your mouse to zoom in and out.

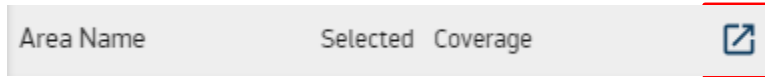
C. Set Search Parameters

1. In order to reduce the number of images found in a search, click on the **Filter** button (see below). You can use the filters to specify parameters such as time frame, % cloud cover, Ground Sample Distance (GSD)—or resolution, Area Off Nadir and Sun Elevation.
 - i. Note that you need to specify an area of interest prior to applying filters.

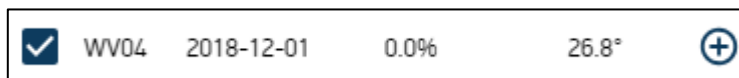


2. Try narrowing the search using the following parameters (see the search filter example below, use your own settings if you like).
 - i. **Product Type:** Core Imagery
 - ii. **Maximum GSD:** Less than 50cm
 - iii. **Start date:** 06/01/2018
 - iv. **End date:** 12/01/2018
 - v. **Area Cloud Cover:** 25%
 - vi. **Area Off Nadir:** <30°
 - vii. **Sun Elevation:** >0°
 - viii. **Automatic Selection:** No automatic selection
 - ix. Leave other parameters at their default settings.
3. Click the **Refresh results** button to apply these filters for data in the study area.
4. The map will be displayed with the footprints of the available images.
5. Click the **Filters** button again to collapse that window so that you can see the list of images that meet your search criteria.

6. Notice that the panel under the Area of Interest and Filters button is now populated with images from Worldview and GeoEye (since QuickBird was decommissioned at the beginning of 2015, there is no QuickBird data for this time frame).
 - i. If you want to open that panel as a separate window, click the **Open Results Window** button (see below).



7. Placing your mouse over a row in the results window will highlight in blue the corresponding footprint in the map.
8. Click the + button to the right side of one image in the results (see below). This will expand the available information on the image.



9. Click **view** to see a preview of the image.

D. Obtaining Imagery

Since you have to purchase imagery from DigitalGlobe, you need to create an account to actually download the products you have selected. This section will just provide general instructions on selecting and downloading data from this site.

Note: Currently, there is an agreement for federal agencies to access imagery from the Worldview sensors at no cost through the CIDR Tool. You should check for data availability on EarthExplorer before going through the purchasing process via DigitalGlobe. More information on how to use these interfaces can be found within their corresponding user guides.

1. Since you chose the **No automatic selection** option in the filters, there is no check in the boxes to the left side of every row. Clicking a box will add a check mark, which enables you to select it for download.
2. Click the box next to one of the images and then click the **Actions** button at the bottom of the panel.
3. In the Actions panel that opens, there are options for sharing information about your AOI and search parameters and options for downloads. Unfortunately, without paying for imagery via your account, these downloads are just basic shapefiles of your selected data product or a PDF map image.