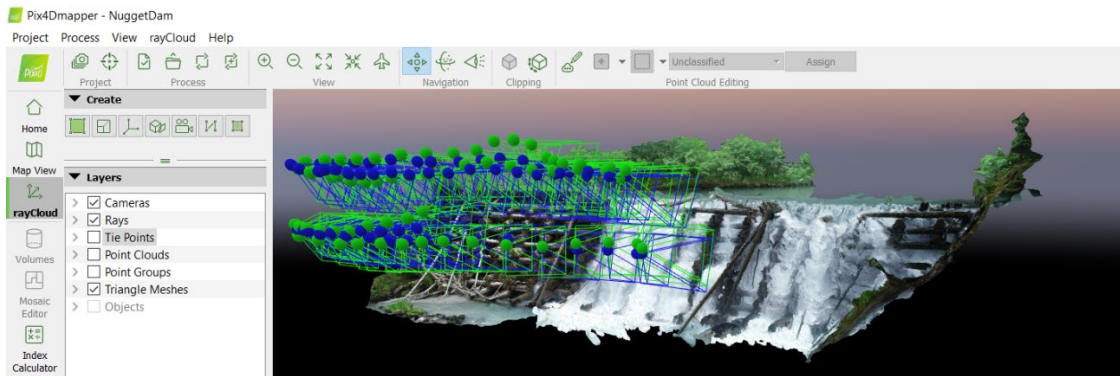


Pix4Dmapper Installation Guide

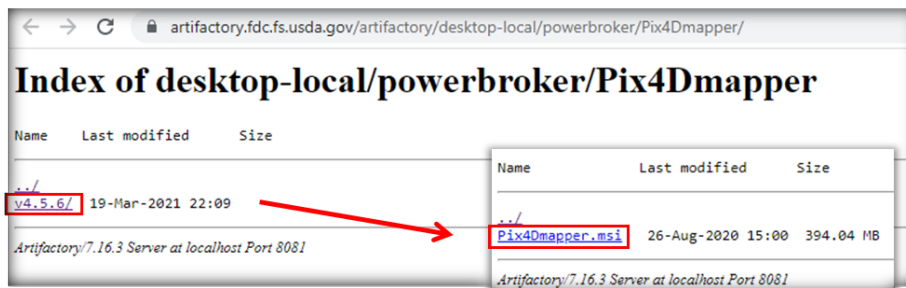
Overview

This document will guide you through the process of downloading and installing Pix4Dmapper, which is a software application to create 3D models, point clouds, and orthomosaics from stereo imagery. The Forest Service has a limited number of these licenses. When closing Pix4Dmapper, be sure to completely log out of the account to free up the license for others to use. If you have any questions regarding Pix4Dmapper licensing, please contact Brad Quayle (brad.quayle@usda.gov) or Jeremy Webb (jeremy.webb@usda.gov). The Forest Service Release Notice can be found by going to the [FS Software Library](#) and searching for “Pix4Dmapper.”



A. Download and install

1. Ensure you are connected to the Forest Service network via VPN or a direct connection.
2. Click on the following link to open the Artifactory web page:
artifactory.fdc.fs.usda.gov/artifactory/desktop-local/powerbroker/Pix4Dmapper/
3. Click on the latest version of Pix4D and then click on the MSI file (see following figure).



4. Save the MSI installation file to your downloads folder (e.g., C:\Users\username\Downloads). If it is not saved in this location, it will require admin privileges to install (see following note).

NOTE: The install file found on the Artifactory server includes Run-elevated privileges. However, it must be saved in your downloads folder to work correctly.

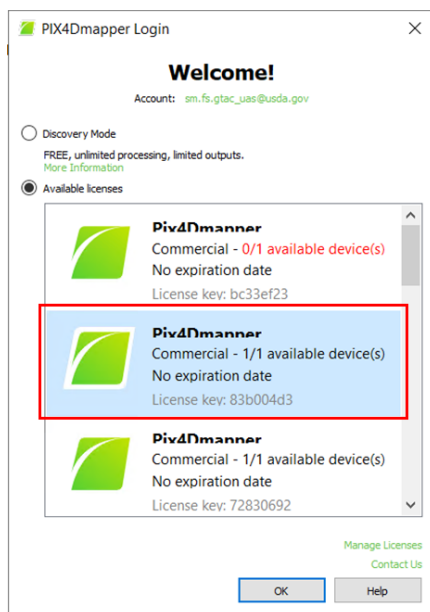
5. Navigate to the MSI file in File Explorer and double left-click the file to start the installation.

6. Click **Next** in the Pix4Dmapper setup window.
7. Check to make sure the destination folder is C:\Program Files\Pix4Dmapper and click **Next**.
8. Click **Install** and wait for the installation to complete (see following note).

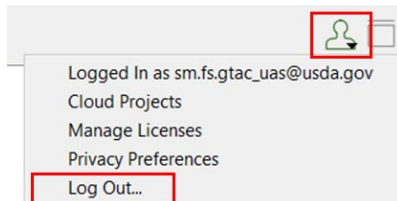
NOTE: If administrator login is requested, check to make sure the installation file was saved correctly in your downloads folder. Also, try restarting your computer and reinstalling. If it still doesn't work, contact CHD (866-945-1354) to complete the installation.

B. Licensing

1. Open Pix4Dmapper (Start button, Pix4Dmapper, and then Pix4Dmapper) and accept the license agreement.
2. Log into the shared account with the following login information:
 - Email: sm.fs.gtac_uas@usda.gov
 - Password: gtac123
3. Once logged in, you'll see a list of available licenses (see following figure). Select one of the available licenses and click OK. Pix4Dmapper will open with options to set up a new project.



4. **VERY IMPORTANT:** When you close Pix4Dmapper, be sure to click on the User Account icon on the top right (see following figure and note) and select **Log Out**. Don't just click the X or select Exit to close the program. Logging out will free up the license for someone else to use.



NOTE: Be sure to log out to free up your license. If we have insufficient licenses to support training or emergency response needs, we reserve the right to pull back licenses.