



WILDLAND FIRES 2015

CAL FIRE

Predictive Services Sacramento

October 2015

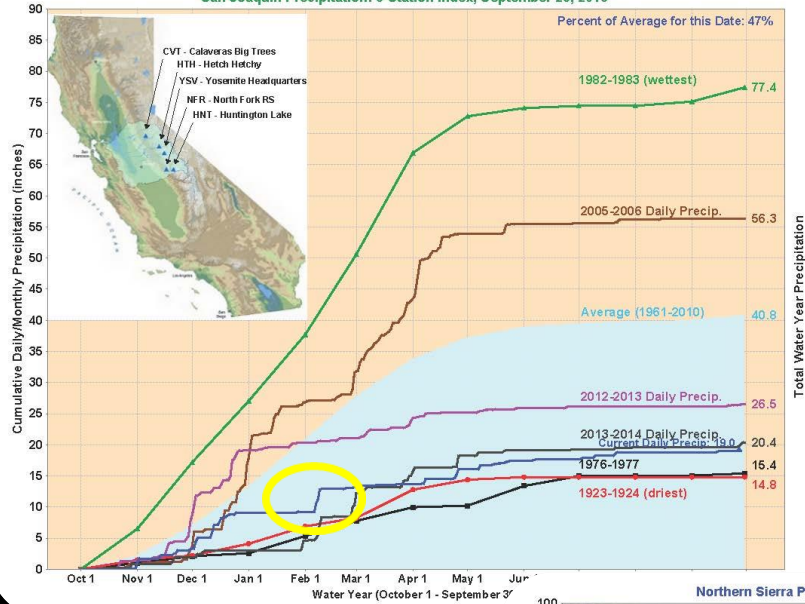
CAL FIRE 2015

- Four Years of Drought
- 2015 Fire Season
- Remote Sensing
- Notable Events

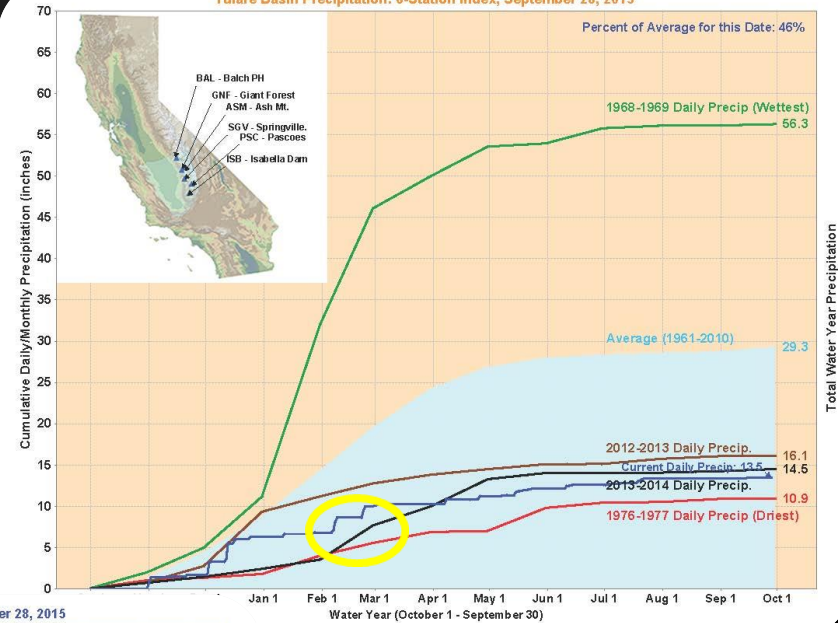


FOUR YEARS OF DROUGHT

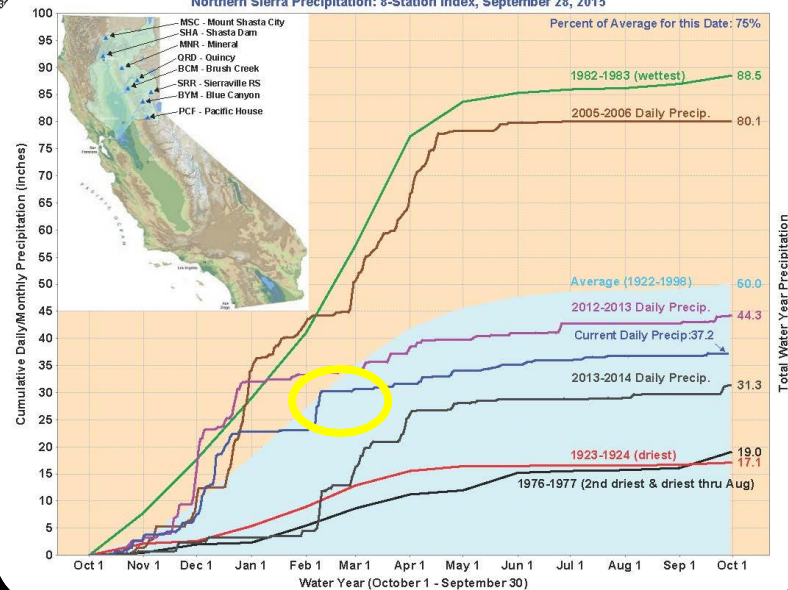
San Joaquin Precipitation: 5-Station Index, September 28, 2015



Tulare Basin Precipitation: 6-Station Index, September 28, 2015

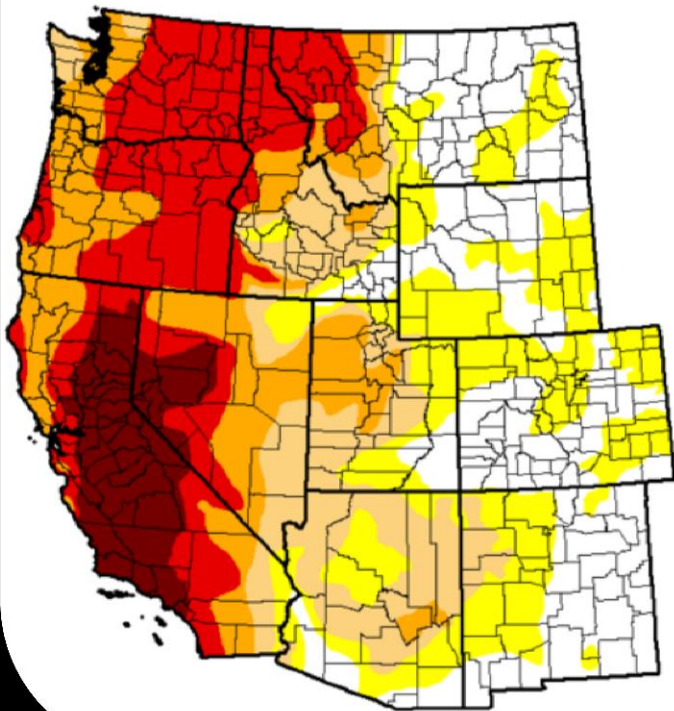


Northern Sierra Precipitation: 8-Station Index, September 28, 2015



FOUR YEARS OF DROUGHT

U.S. Drought Monitor West



October 20, 2015

(Released Thursday, Oct. 22, 2015)

Valid 8 a.m. EDT

Drought Conditions (Percent Area)

	None	D0-D4	D1-D4	D2-D4	D3-D4	D4
Current	22.91	77.09	56.07	41.32	26.23	7.62
Last Week 10/13/2015	25.31	74.69	57.06	41.92	26.44	7.62
3 Months Ago 7/21/2015	25.49	74.51	61.04	41.92	18.87	7.17
Start of Calendar Year 1/2/2015	34.76	65.24	54.48	33.50	18.68	5.40
Start of Water Year 9/29/2014	22.77	77.23	57.81	42.42	26.50	7.62
One Year Ago 10/21/2014	31.95	68.05	55.56	34.82	19.08	8.90

Intensity

D0 Abnormally Dry	D3 Extreme Drought
D1 Moderate Drought	D4 Exceptional Drought
D2 Severe Drought	

The Drought Monitor focuses on broad-scale conditions. Local conditions may vary. See accompanying text summary for forecast statements.

Author:

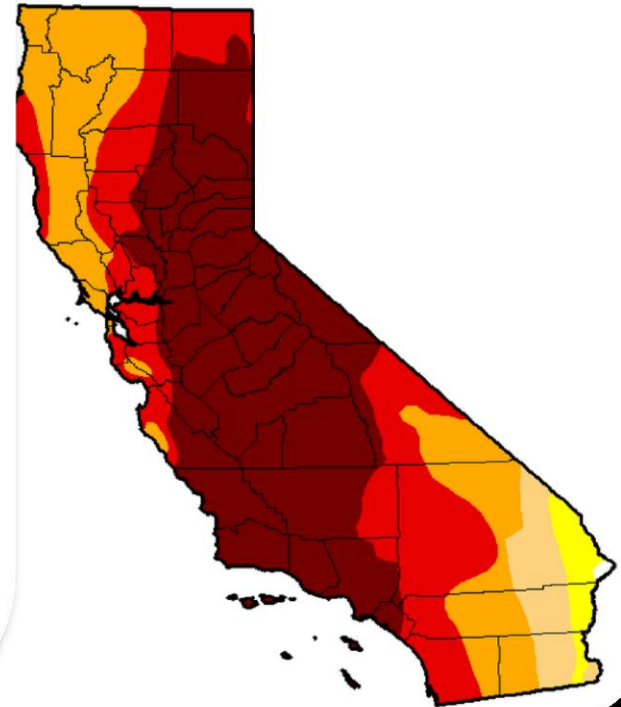
Brad Rippey

U.S. Department of Agriculture



<http://droughtmonitor.unl.edu>

U.S. Drought Monitor California



FOUR YEARS OF DROUGHT



High “dead to live fuels” ratio and it is increasing

2015 FIRE SEASON

- Early Fire Season
- Acres and fire starts have increased
- Extreme fire intensity during the night
- Overall extreme fire behavior

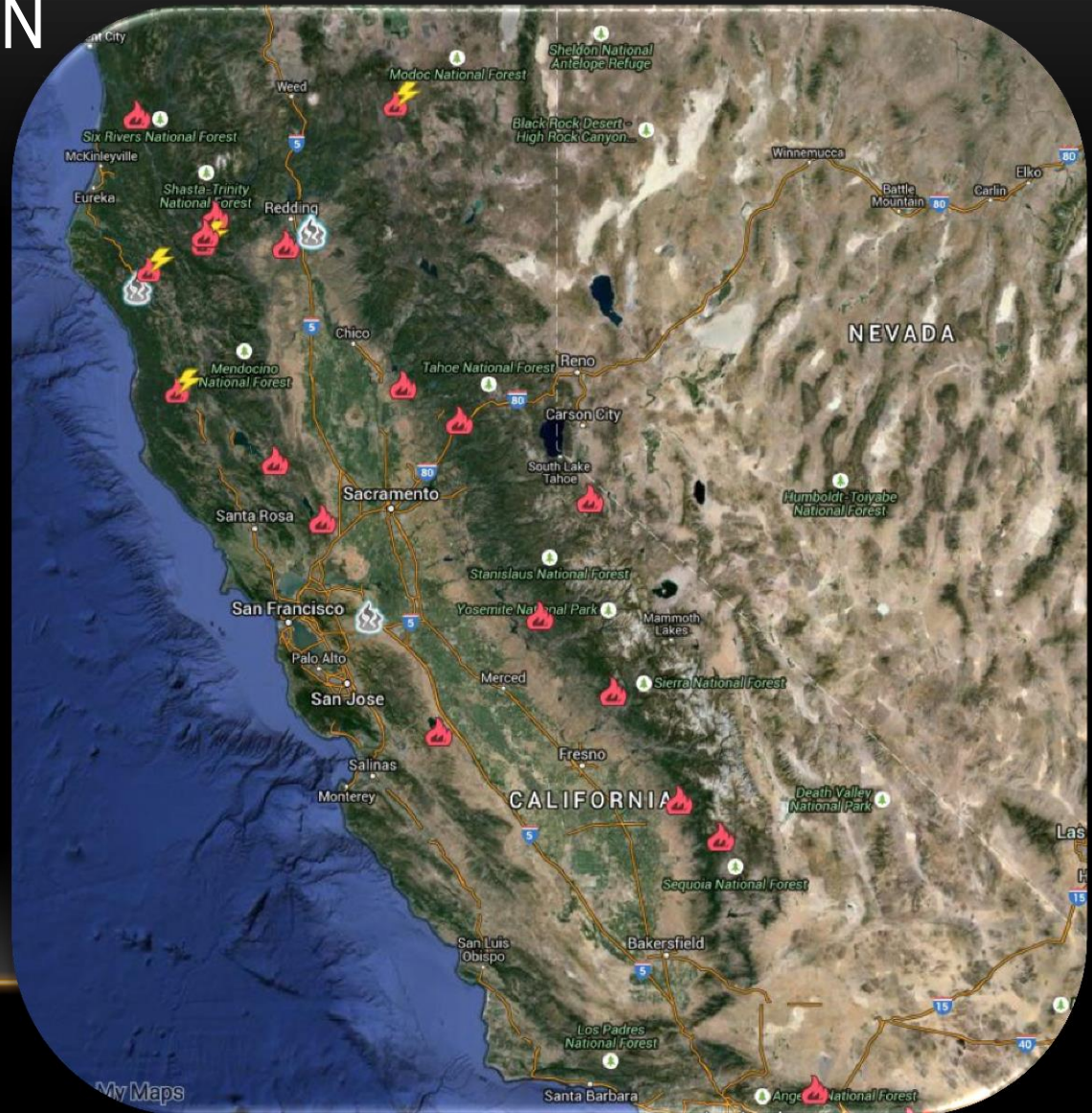
The below statistics are tracked on a weekly basis and provide a snapshot of the number of fires and acres burned. These numbers are subject to change until the final fire season reports are completed and tabulated.

NUMBER OF FIRES AND ACRES:		
Interval	Fires	Acres
January 1, 2015 through October 17, 2015	5,870	307,404
January 1, 2014 through October 17, 2014	4,017	190,810
5 year average (same interval)	4,123	108,084

(Statistics include all wildfires responded by CAL FIRE in both the State Responsibility Area, as well as the Local Responsibility Area under contract with the department, plus all large wildfires in State Responsibility Area protected by CAL FIRE's contract counties).

2015 FIRE SEASON

- August 15, 2015
Snap Shot



2015 FIRE SEASON

- Incident Management Teams

- CAL FIRE teams were deployed 15 times as of September 29, 2015
- Most of the activations were Central and Northern California
- Several Unified Command Incidents with USFS
- Multiple CAL FIRE Teams out at a time



2015 FIRE SEASON

As of September 29, 2015 California Fire Agencies used Infrared flights on 42 Incidents with 418 flights.

2015		
Agency	Incidents	Flights
LG	1	1
CAL FIRE	16	91
NPS	1	1
USFS	24	325
Total	42	418

2014		
Agency	Incidents	Flights
BLM	2	9
CAL FIRE	22	70
NPS	3	20
USFS	28	249
Total	55	348

2015 FIRE SEASON DRONES



Drone hobbyists continue to interfere with
wildfire battles in West

NOTABLE EVENTS



JUSTIN BOLIVAN/GETTY IMAGES

SOUTHERN CALIFORNIA FIRES AND FLOODS

- July 17 , 2015 North Fire
July 19 2015 a short distance away a bridge on Interstate 10 is damaged from flood waters.

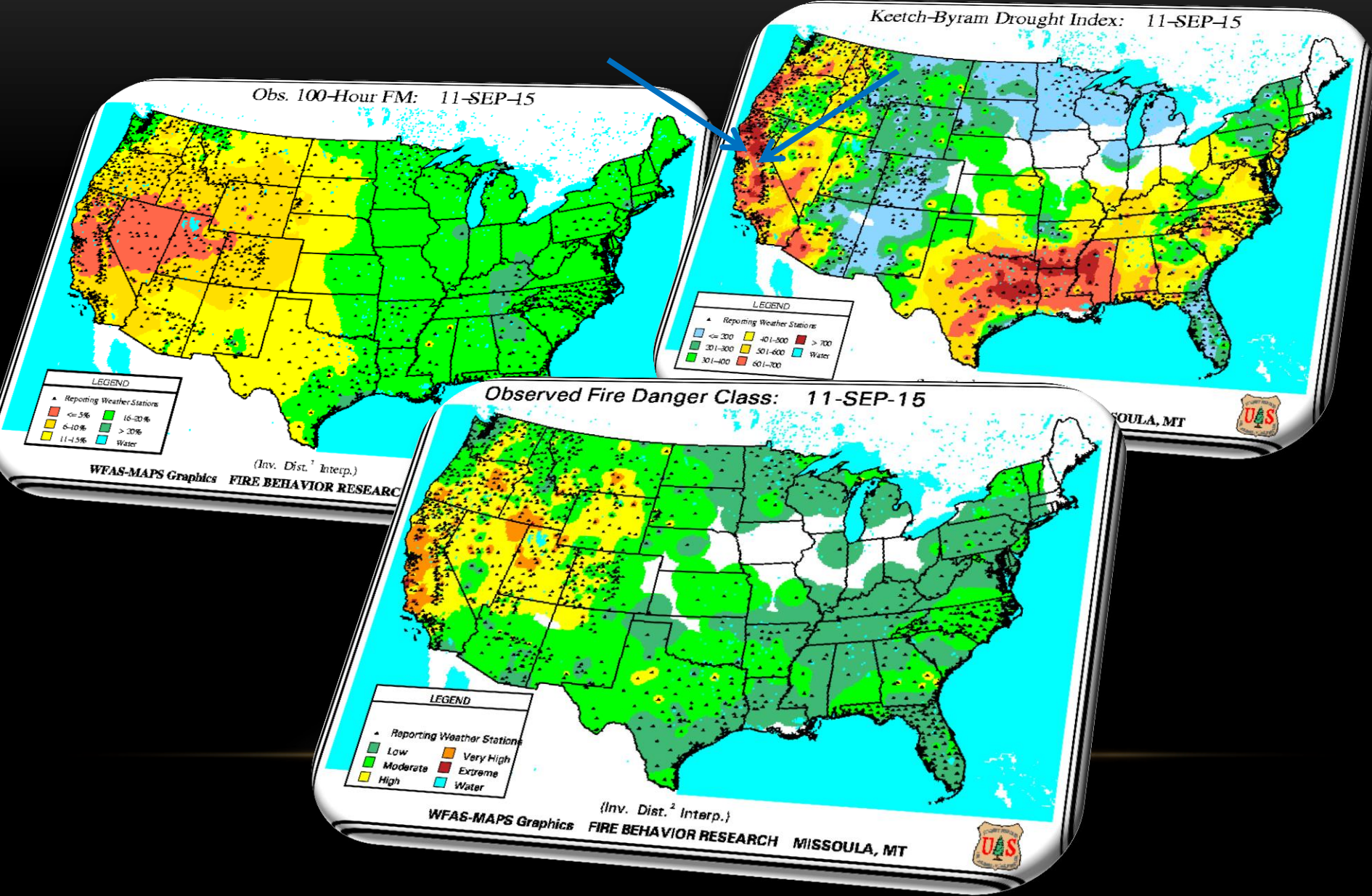


LOWELL FIRE JULY 27, 2015

4 FIREFIGHTERS SUFFERED BURN INJURIES



WFAS- MAPS SEPTEMBER 11, 2015



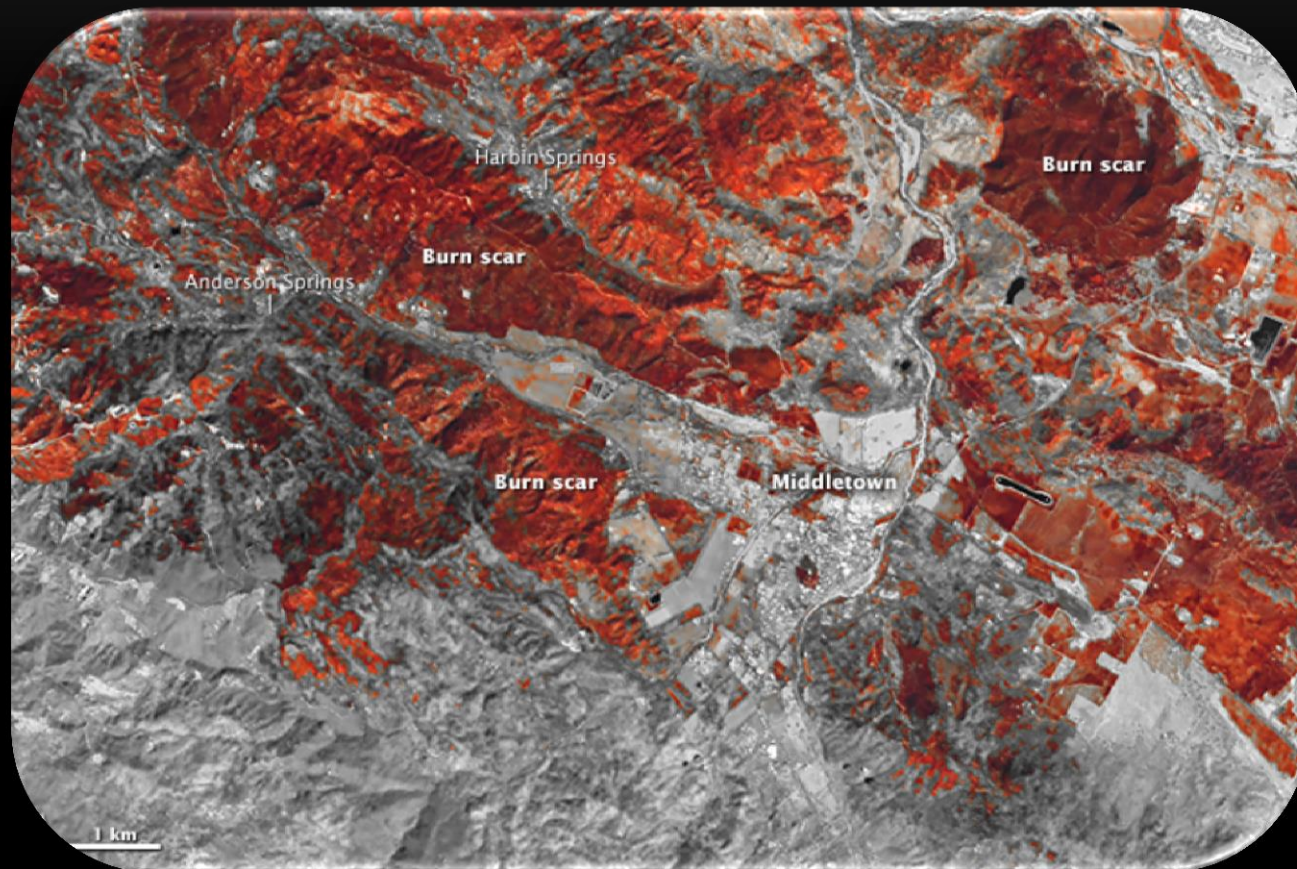
BUTTE FIRE



VALLEY FIRE



VALLEY FIRE



YEAR END TOP 20 LIST

Top 20 Deadliest California Wildfires

	FIRE NAME (CAUSE)	DATE	COUNTY	ACRES	STRUCTURES	DEATHS
1	GRIFFITH PARK (<i>Unknown</i>)	October 1933	Los Angeles	47	0	29
2	TUNNEL - Oakland Hills (<i>Rekindle</i>)	October 1991	Alameda	1,600	2,900	25
3	CEDAR (<i>Human Related</i>)	October 2003	San Diego	273,246	2,820	15
4	RATTLESNAKE (<i>Arson</i>)	July 1953	Glenn	1,340	0	15
5	LOOP (<i>Unknown</i>)	November 1966	Los Angeles	2,028	0	12
6	INAJA (<i>Human Related</i>)	November 1956	San Diego	43,904	0	11
7	HAUSER CREEK (<i>Human Related</i>)	October 1943	San Diego	13,145	0	11
8	IRON ALPS COMPLEX (<i>Lightning</i>)	August 2008	Trinity	105,855	10	10
9	HARRIS (<i>Under Investigation</i>)	October 2007	San Diego	90,440	548	8
10	CANYON (<i>Unknown</i>)	August 1968	Los Angeles	22,197	0	8
11	OLD (<i>Human Related</i>)	October 2003	San Bernardino	91,281	1,003	6
12	DECKER (<i>Vehicle</i>)	August 1959	Riverside	1,425	1	6
13	HACIENDA (<i>Unknown</i>)	September 1955	Los Angeles	1,150	0	6
14	ESPERANZA (<i>Arson</i>)	October 2006	Riverside	40,200	54	5
15	LAGUNA (<i>Powerlines</i>)	September 1970	San Diego	175,425	382	5
16	VALLEY*** (<i>Under Investigation</i>)	September 2015	Lake, Napa & Sonoma	76,067	1,910***	4
17	PANORAMA (<i>Arson</i>)	November 1980	San Bernardino	23,600	325	4
18	CLAMPITT (<i>Powerlines</i>)	September 1970	Los Angeles	105,212	86	4
19	TOPANGA (<i>Arson</i>)	August 2009	Los Angeles	18,000	323	3
20	BUTTE*** (<i>Under Investigation</i>)	September 2015	Amador & Calaveras	70,868	818***	2

***Information from the Butte Fire and Valley Fire may change.

Multiple fires have had the 2 fatalities, but only the most recent are listed.

*** does not include fire jurisdiction. These are the Top 20 regardless of whether they were state, federal, or local responsibility.



9/23/2015

YEAR END TOP 20 LIST

Top 20 Most Damaging California Wildfires

	FIRE NAME (CAUSE)	DATE	COUNTY	ACRES	STRUCTURES	DEATHS
1	TUNNEL - Oakland Hills (Rekindle)	October 1991	Alameda	1,600	2,900	25
2	CEDAR (Human Related)	October 2003	San Diego	273,246	2,820	15
3	VALLEY*** (Under Investigation)	September 2015	Lake, Napa & Sonoma	76,067	1,910***	3
4	WITCH (Powerlines)	October 2007	San Diego	197,990	1,650	2
5	OLD (Human Related)	October 2003	San Bernardino	91,281	1,003	6
6	JONES (Undetermined)	October 1999	Shasta	26,200	954	1
7	BUTTE*** (Under Investigation)	September 2015	Amador & Calaveras	70,868	818***	2
8	PAINT (Arson)	June 1990	Santa Barbara	4,900	641	1
9	FOUNTAIN (Arson)	August 1992	Shasta	63,960	636	0
10	SAYRE (Misc.)	November 2008	Los Angeles	11,262	604	0
11	CITY OF BERKELEY (Powerlines)	September 1923	Alameda	130	584	0
12	HARRIS (Under Investigation)	October 2007	San Diego	90,440	548	8
13	BEL AIR (Undetermined)	November 1961	Los Angeles	6,090	484	0
14	LAGUNA (Arson)	October 1993	Orange	14,437	441	0
15	LAGUNA (Powerlines)	September 1970	San Diego	175,425	382	5
16	HUMBOLDT (Arson)	June 2008	Butte	23,344	351	0
17	PANORAMA (Arson)	November 1980	San Bernardino	23,600	325	4
18	TOPANGA (Arson)	November 1993	Los Angeles	18,000	323	3
19	49ER (Illegal Debris Burning)	September 1988	Nevada	33,700	312	0
20	ANGORA (Human Related)	June 2007	El Dorado	3,100	309	0

***Information from the Butte Fire and Valley Fire will likely change until the fire is contained and the full damage inspection is complete.

Structures include homes, outbuildings (barns, garages, sheds, etc) and commercial properties.

Does not include fire jurisdiction. These are the Top 20 regardless of whether they were state, federal, or local responsibility.



9/23/2015

YEAR END TOP 20 LIST

Top 20 Largest California Wildfires

	FIRE NAME (CAUSE)	DATE	COUNTY	ACRES	STRUCTURES	DEATHS
1	CEDAR (Human Related)	October 2003	San Diego	273,246	2,820	15
2	RUSH (Lightning)	August 2012	Lassen	271,911 CA / 43,666 NV	0	0
3	RIM (Human Related)	August 2013	Tuolumne	257,314	112	0
4	ZACA (Human Related)	July 2007	Santa Barbara	240,207	1	0
5	MATILJA (Undetermined)	September 1932	Ventura	220,000	0	0
6	WITCH (Powerlines)	October 2007	San Diego	197,990	1,650	2
7	KLAMATH THEATER COMPLEX (Lightning)	June 2008	Siskiyou	192,038	0	2
8	MARBLE CONE (Lightning)	July 1977	Monterey	177,866	0	0
9	LAGUNA (POWERLINES)	September 1970	San Diego	175,425	382	5
10	BASIN COMPLEX (Lightning)	June 2008	Monterey	162,818	58	0
11	DAY FIRE (Human Related)	September 2006	Ventura	162,702	11	0
12	STATION FIRE (Human Related)	August 2009	Los Angeles	160,557	209	2
13	ROUGH*** (Lightning)	July 2015	Fresno	151,493	4	0
14	McNALLY (Human Related)	July 2002	Tulare	150,696	17	0
15	STANISLAUS COMPLEX (Lightning)	August 1987	Tuolumne	145,980	28	1
16	BIG BAR COMPLEX (Lightning)	August 1999	Trinity	140,948	0	0
17	HAPPY CAMP COMPLEX (Lightning)	August 2014	Siskiyou	134,056	6	0
18	CAMPBELL COMPLEX (Powerlines)	August 1990	Tehama	125,892	27	0
19	WHEELER (Arson)	July 1985	Ventura	118,000	26	0
20	SIMI (Under Investigation)	October 2003	Ventura	108,204	300	0

***Information from the Rough Fire will likely change until the fire is contained.

There is no doubt that there were fires with significant acreage burned in years prior to 1932, but those records are less reliable, and this list is to give an overview of the large fires in more recent times.

* does not include fire jurisdiction. These are the Top 20 regardless of whether they were state, federal, or local responsibility.



QUESTIONS?

