



WILDLAND FIRES 2016

CAL FIRE

Predictive Services Sacramento

Fall 2016

CAL FIRE 2016 FALL PRESENTATION

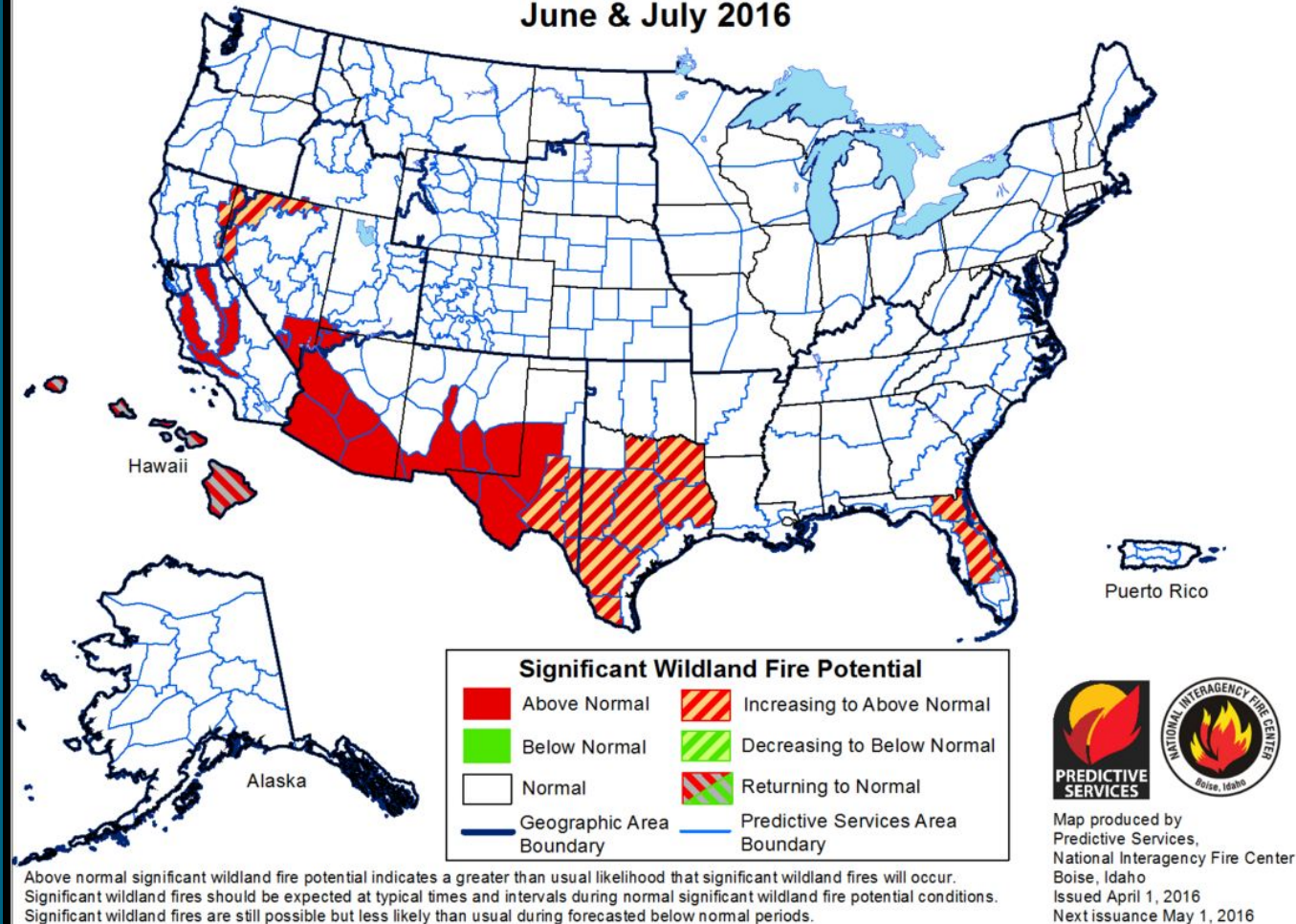
- 2016 Fire Season Outlook
- 2016 Fire Season
- Season Ending Events



2016 FIRE SEASON OUTLOOK

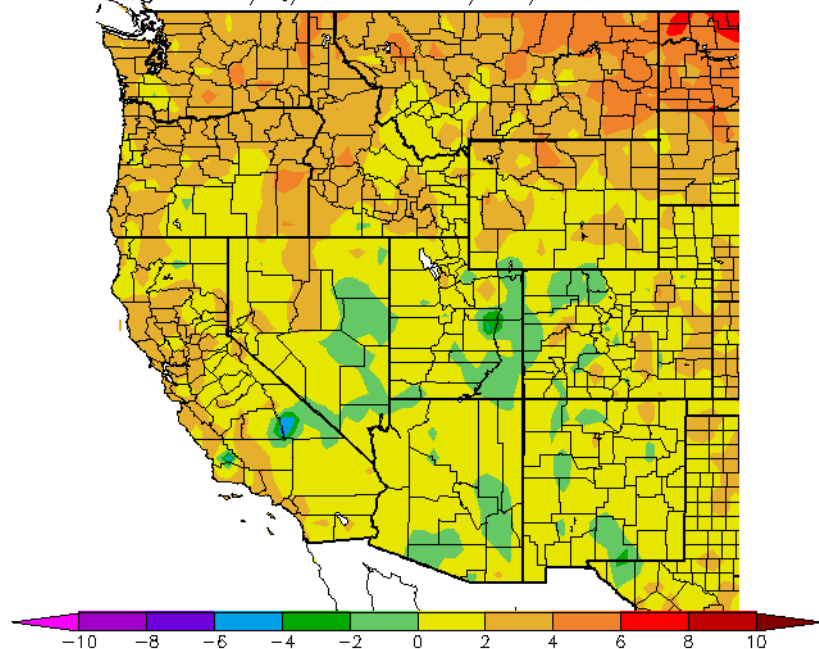


Significant Wildland Fire Potential Outlook June & July 2016



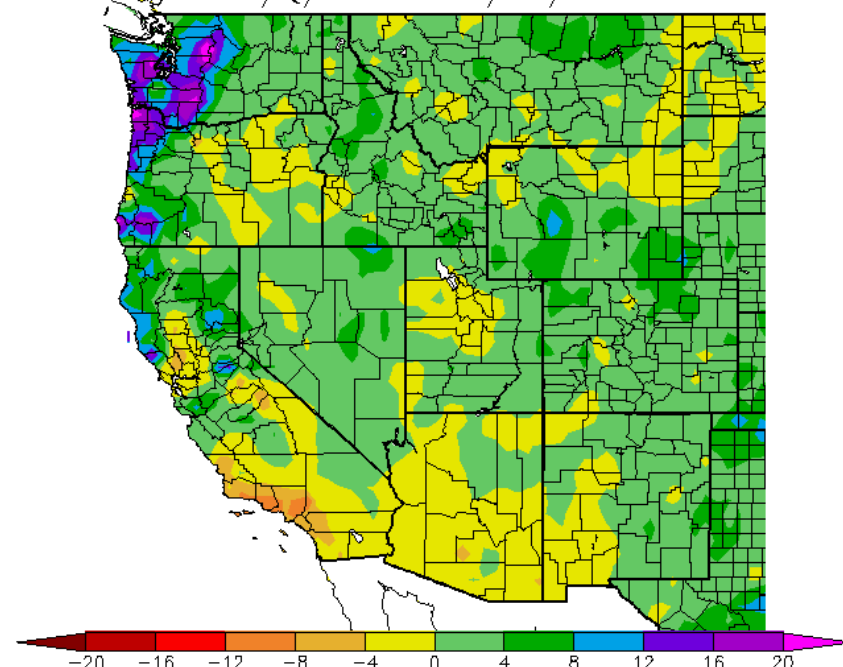
DEPARTURE FROM AVERAGE FROM OCTOBER 1, 2015

Ave. Temperature dep from Ave (deg F)
10/1/2015 – 5/21/2016



Generated 5/22/2016 at WRCC using provisional data.
NOAA Regional Climate Centers

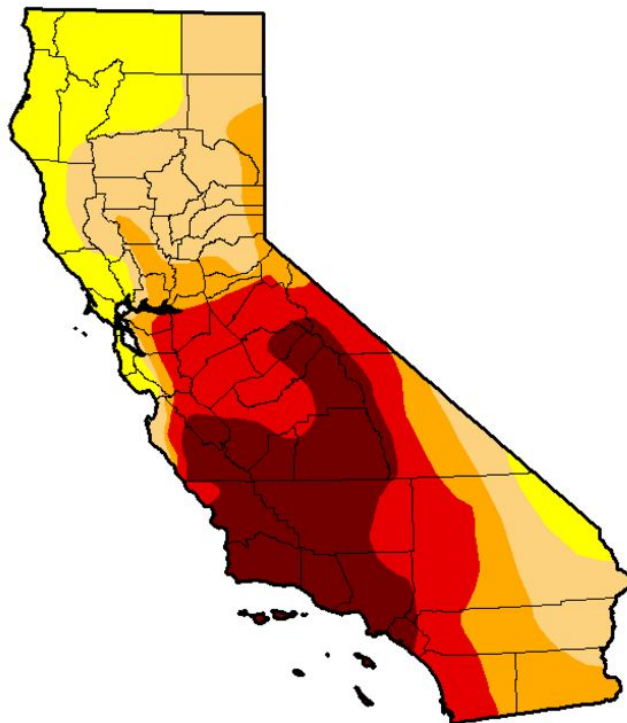
Precipitation Departure from Average (in.)
10/1/2015 – 5/21/2016



Generated 5/22/2016 at WRCC using provisional data.
NOAA Regional Climate Centers

FIVE YEARS OF DROUGHT

U.S. Drought Monitor California



August 30, 2016

(Released Thursday, Sep. 1, 2016)

Valid 8 a.m. EDT

Drought Conditions (Percent Area)

	None	D0-D4	D1-D4	D2-D4	D3-D4	D4
Current	0.00	100.00	83.59	59.02	42.80	21.04
Last Week 8/23/2016	0.00	100.00	83.59	59.02	42.80	21.04
3 Months Ago 5/31/2016	6.08	93.92	83.91	59.02	42.99	21.04
Start of Calendar Year 1/2/2015	0.00	100.00	97.33	87.55	69.07	44.84
Start of Water Year 9/29/2015	0.14	99.86	97.33	92.36	71.08	46.00
One Year Ago 9/9/2015	0.14	99.86	97.35	92.36	71.08	46.00

Intensity:

D0 Abnormally Dry	D3 Extreme Drought
D1 Moderate Drought	D4 Exceptional Drought
D2 Severe Drought	

The Drought Monitor focuses on broad-scale conditions. Local conditions may vary. See accompanying text summary for forecast statements.

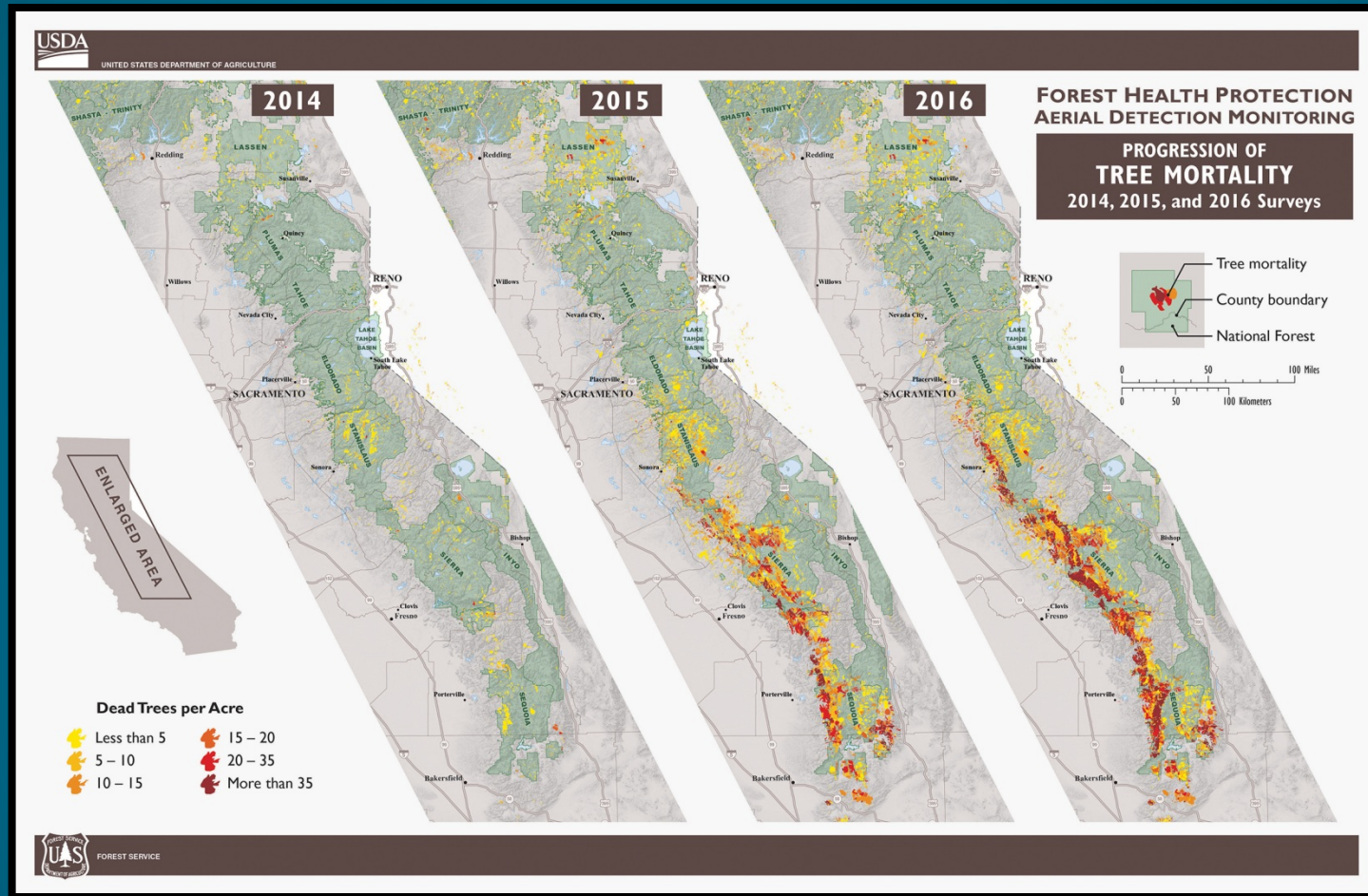
Author:

Chris Fenimore
NCE/NESDIS/NOAA



<http://droughtmonitor.unl.edu/>

SINCE 2010 66 MILLION TREES HAVE DIED



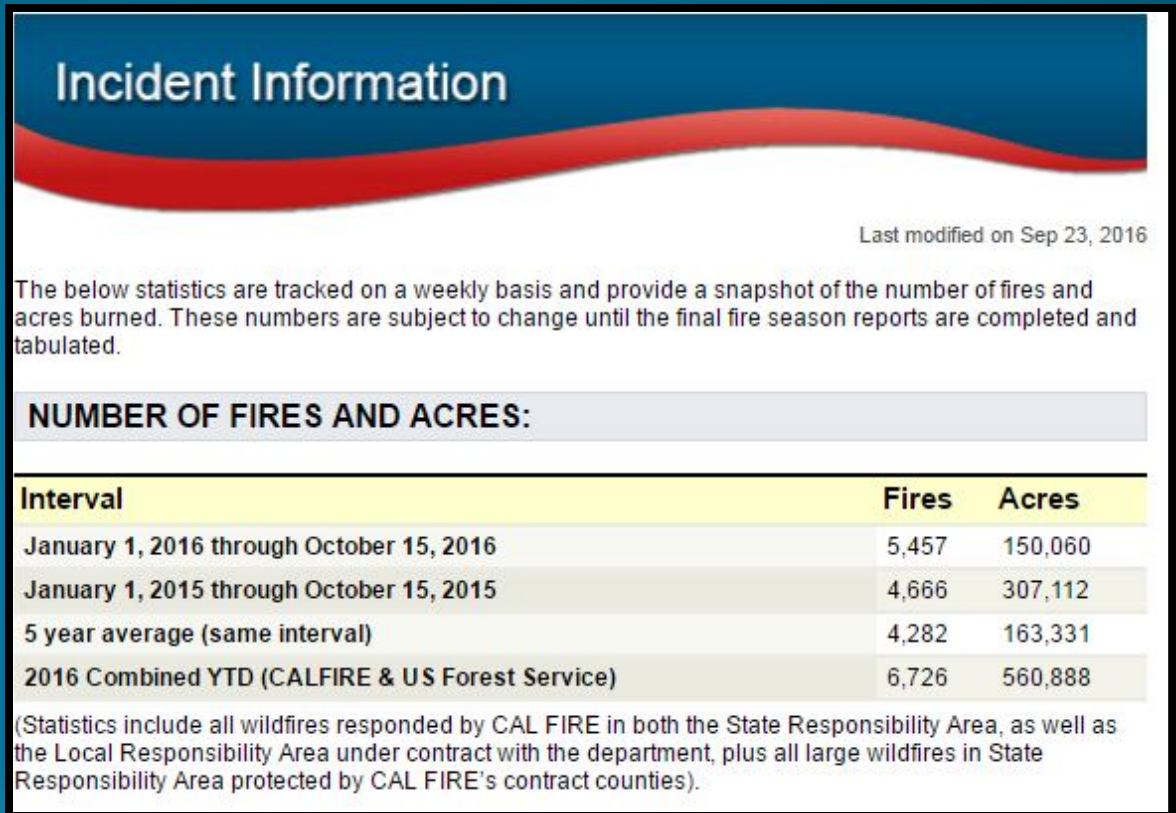
FIVE YEARS OF DROUGHT



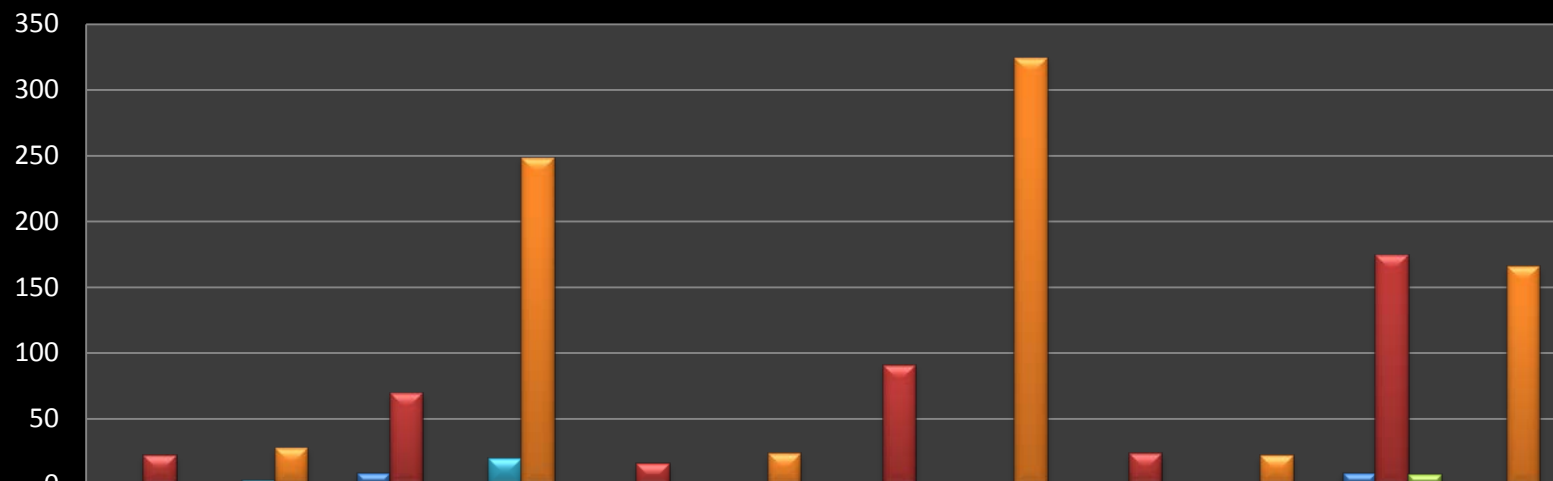
High " dead to live fuels " ratio and it is increasing

2016 FIRE SEASON

- Fire starts have increased
- Complex fires



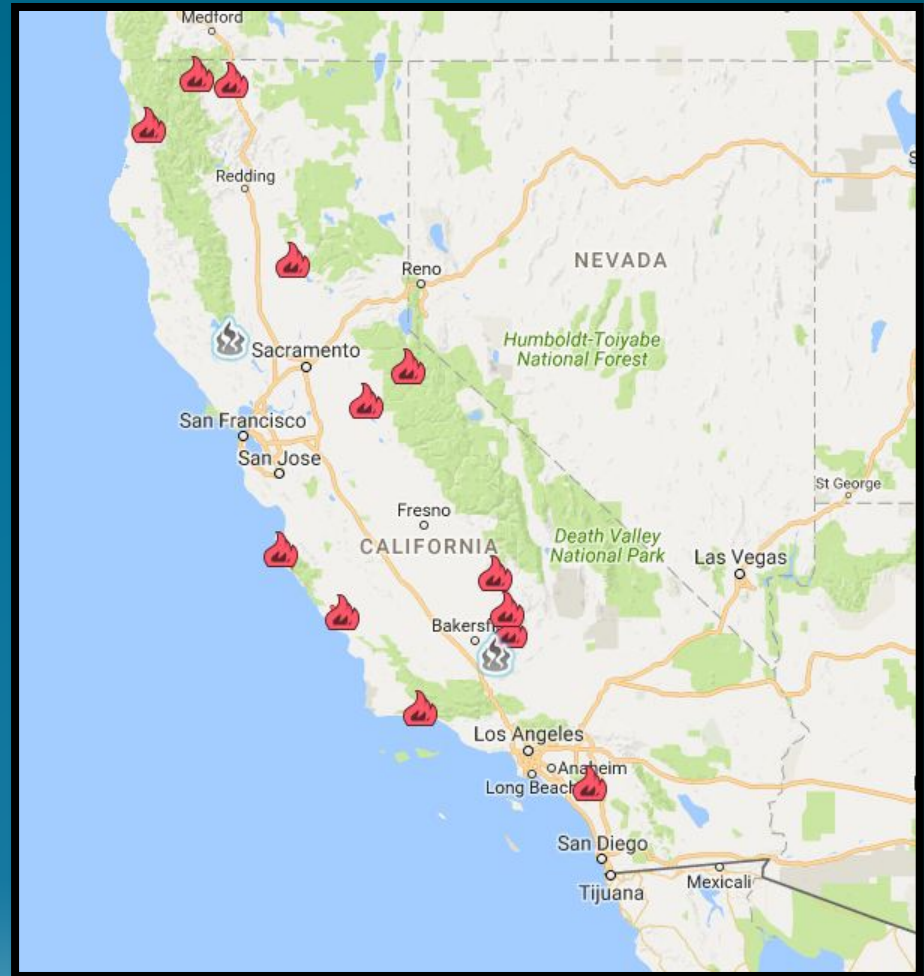
2016 FIRE SEASON IR FLIGHT FOR CALIFORNIA



	2014		2015		2016	
	Incidents	Flights	Incidents	Flights	Incidents	Flights
BLM	2	9	0	0	2	9
CAL FIRE	22	70	16	91	24	175
DOD	0	0	0	0	2	8
LG	0	0	1	1	0	0
NPS	3	20	1	1	0	0
USFS	28	249	24	325	22	166

2016 FIRE SEASON

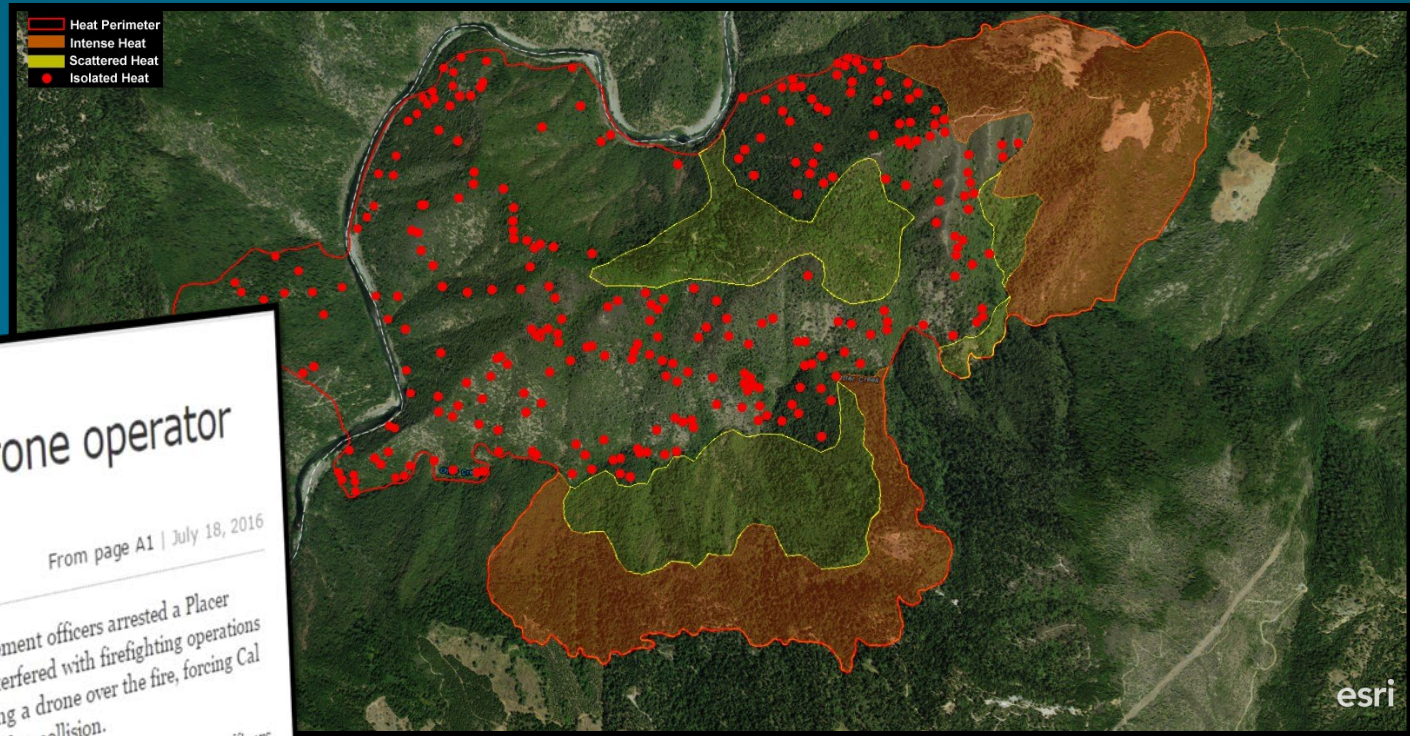
- Incident Management Teams
 - CAL FIRE teams were deployed 12 times
 - Fires were state wide Large fire in Central California
 - Several Unified Command Incidents with USFS
 - Multiple CAL FIRE Teams assigned at one time



NOTABLE EVENTS



TRAILHEAD, DRONE ARREST



News

Trailhead Fire drone operator id'd, arrested

From page A1 | July 18, 2016

By Cal Fire

FORESTHILL — Cal Fire law enforcement officers arrested a Placer County man Friday who allegedly interfered with firefighting operations recently on the Trailhead Fire by flying a drone over the fire, forcing Cal Fire to ground aircraft rather than risk a collision.

Information posted on social media helped lead law enforcement officers to Eric Wasser, 57, of Foresthill. He was arrested Friday afternoon, booked into the Placer County jail in Auburn and charged with interfering with firefighting operations, Penal Code Section 148.2.

This is the first arrest by Cal Fire law enforcement of a drone operator for allegedly interfering with firefighting.

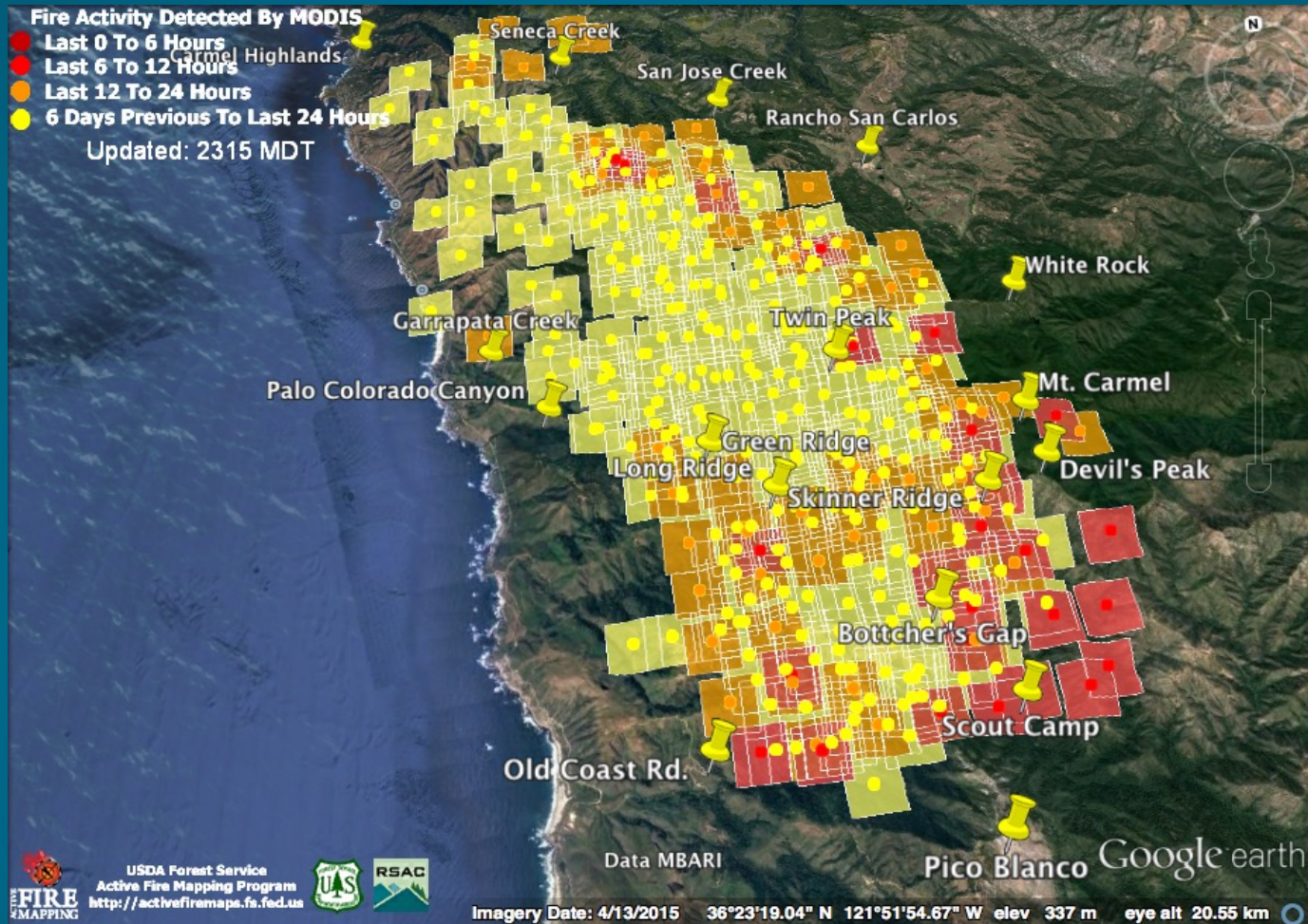
ERSKINE FIRE



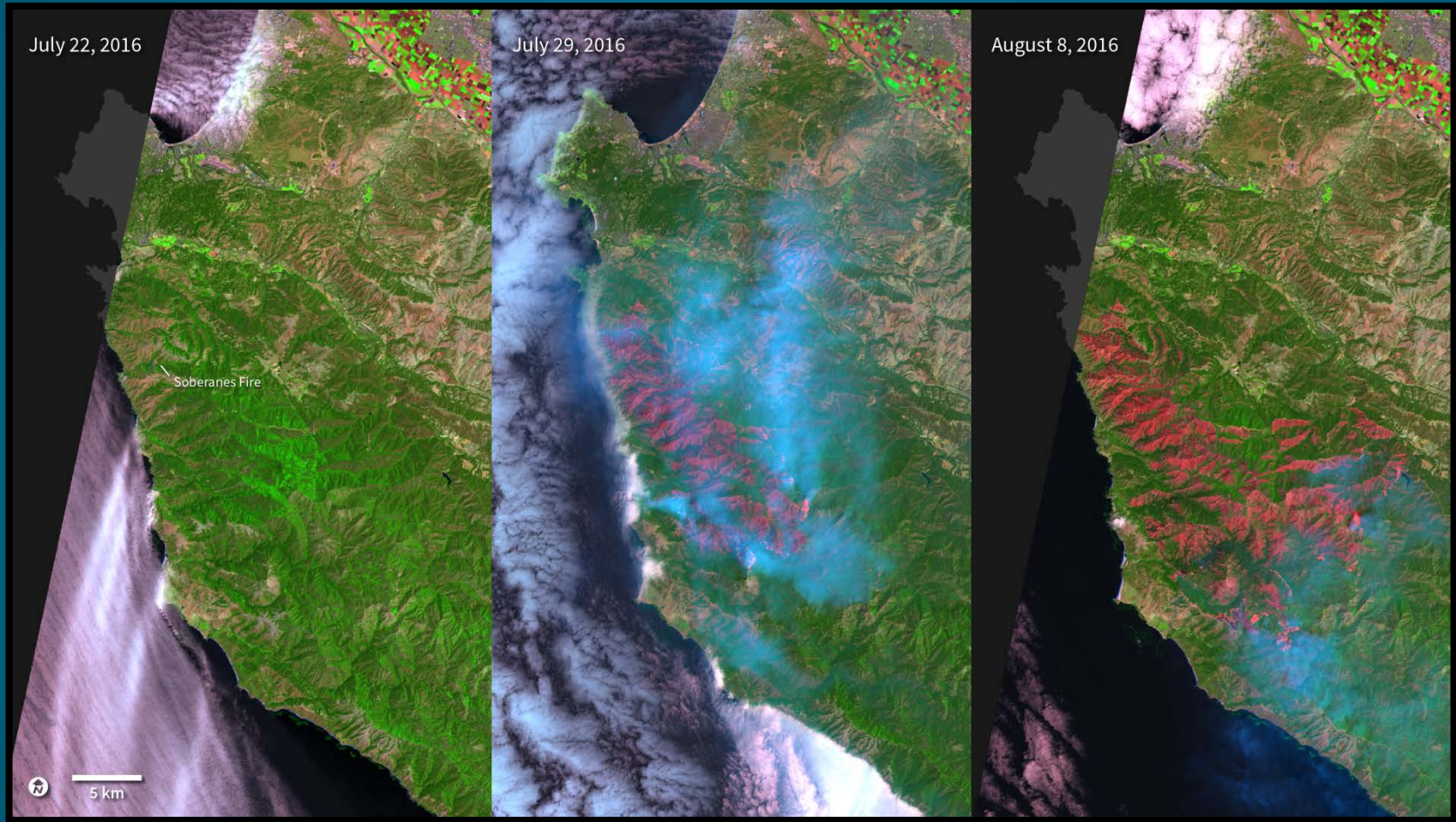
BLUE CUT FIRE



SOBERANES FIRE



LANDSAT 8 VIEWS, THE SOBERANES FIRE



CHIMNEY FIRE



CLAYTON FIRE AUGUST 13, 2016



Photo by: Adam Wiedmann

YEAR END TOP 20 LIST

Top 20 Most Damaging California Destructive Wildfires

	FIRE NAME (CAUSE)	DATE	COUNTY	ACRES	STRUCTURES	DEATHS
1	TUNNEL - Oakland Hills (Rekindle)	October 1991	Alameda	1,600	2,900	25
2	CEDAR (Human Related)	October 2003	San Diego	273,246	2,820	15
3	VALLEY (Electrical)	September 2015	Lake, Napa & Sonoma	76,067	1,955	4
4	WITCH (Powerlines)	October 2007	San Diego	197,990	1,650	2
5	OLD (Human Related)	October 2003	San Bernardino	91,281	1,003	6
6	JONES (Undetermined)	October 1999	Shasta	26,200	954	1
7	BUTTE (Powerlines)	September 2015	Amador & Calaveras	70,868	921	2
8	PAINT (Arson)	June 1990	Santa Barbara	4,900	641	1
9	FOUNTAIN (Arson)	August 1992	Shasta	63,960	636	0
10	SAYRE (Misc.)	November 2008	Los Angeles	11,262	604	0
11	CITY OF BERKELEY (Powerlines)	September 1923	Alameda	130	584	0
12	HARRIS (Under Investigation)	October 2007	San Diego	90,440	548	8
13	BEL AIR (Undetermined)	November 1961	Los Angeles	6,090	484	0
14	LACUNA (Arson)	October 1993	Orange	14,437	441	0
15	ERSKINE (Under Investigation)	June 2016	Kern	46,684	386	2
16	LACUNA (Powerlines)	September 1970	San Diego	175,425	382	0
17	HUMBOLDT (Arson)	June 2008	Butte	23,344	351	0
18	PANORAMA (Arson)	November 1980	San Bernardino	23,600	325	3
19	FOYENGA (Arson)	November 1993	Los Angeles	18,000	323	0
20	BLUE CUT* (Under Investigation)	August 2016	San Bernardino	37,020	321	0

*Numbers are subject to change as Damage Assessment continues.

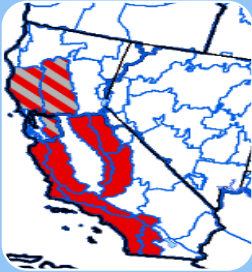
*Structures include homes, outbuildings (barns, garages, sheds, etc) and commercial properties destroyed.

*Deaths not include fire jurisdiction. These are the Top 20 regardless of whether they were state, federal, or local responsibility.



8/21/2016

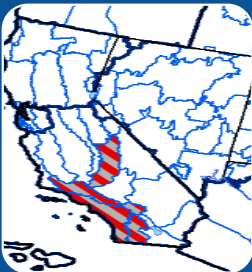
FALL/ WINTER OUTLOOK



October 2016

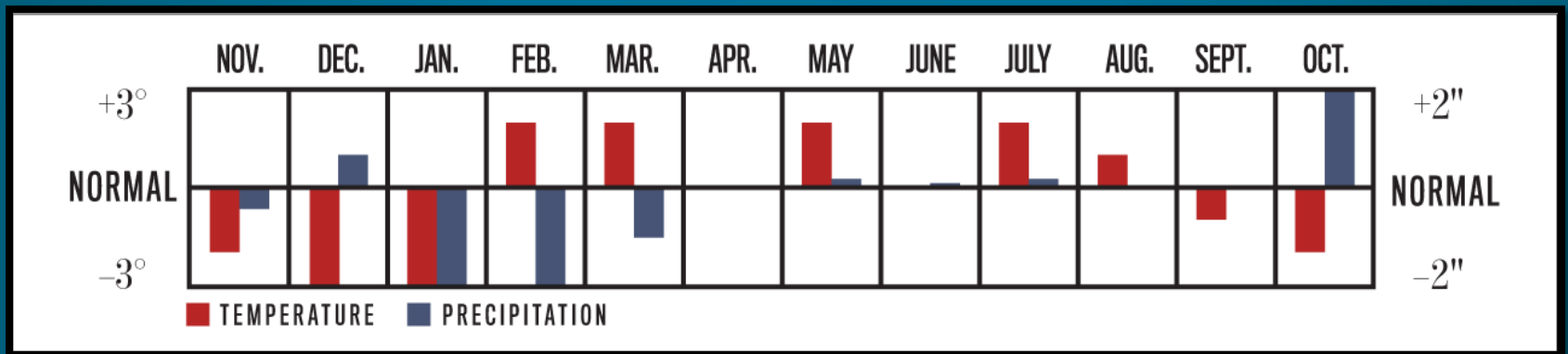


November 2016



December 2016 &
January 2017

TEMPERATURE AND PRECIPITATION NOVEMBER 2016 TO OCTOBER 2017



WILDCARDS

- *Lightning/Monsoon Tracks*
- *North Winds*
- *Summer Weather*
- *Santa Ana Season Severity*
- *Season Ending Event*
- *La Nina ????*
- *Six years of Drought???*



QUESTIONS?

