

NIROPS - “Multiple Use 2010” Rocky Mountain T2 IMT – Team A Medano vs. Fourmile Canyon Fires

presented by
Todd Richardson, Type 2 Incident Commander

Produced by Skip Edel – Team A, GISS
National Park Service - Spatial Fire Analyst,
Intermountain Region Fire Management Program

Objectives

- Compare two fires that were under different strategic requirements and delegated assignment.
- Speak to the nuances of the available IR product that allowed Team A to:
 - Communicate situation
 - Plan
 - Assign
 - Validate
 - Others????

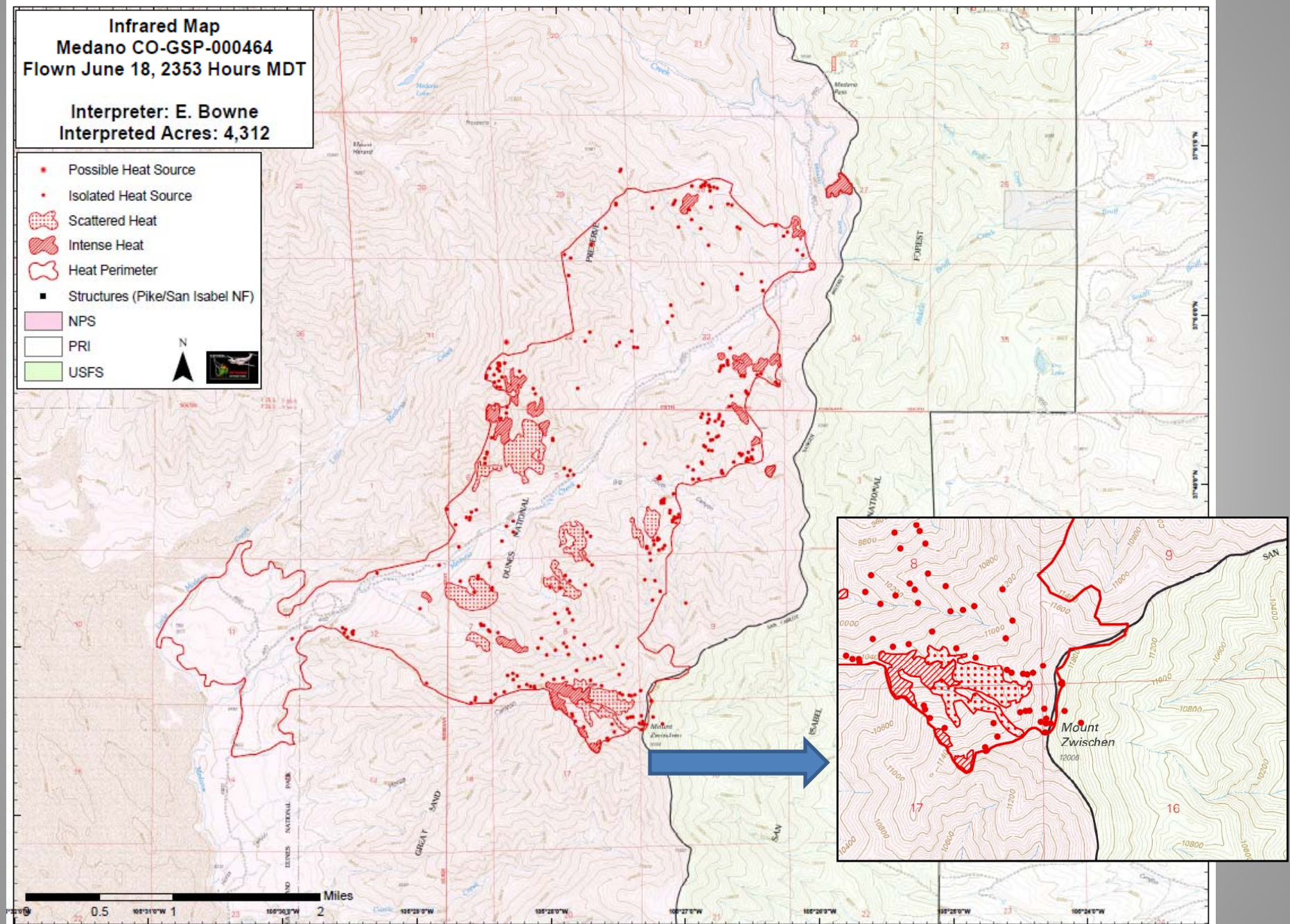
- **Good Experiences with IR:**

- Great support from IRIN either directly on fire or working remotely.
- Online ordering form is fast/easy. Any way to automate the A number process so that it is more seamless?
- Usually available.
- Great products!

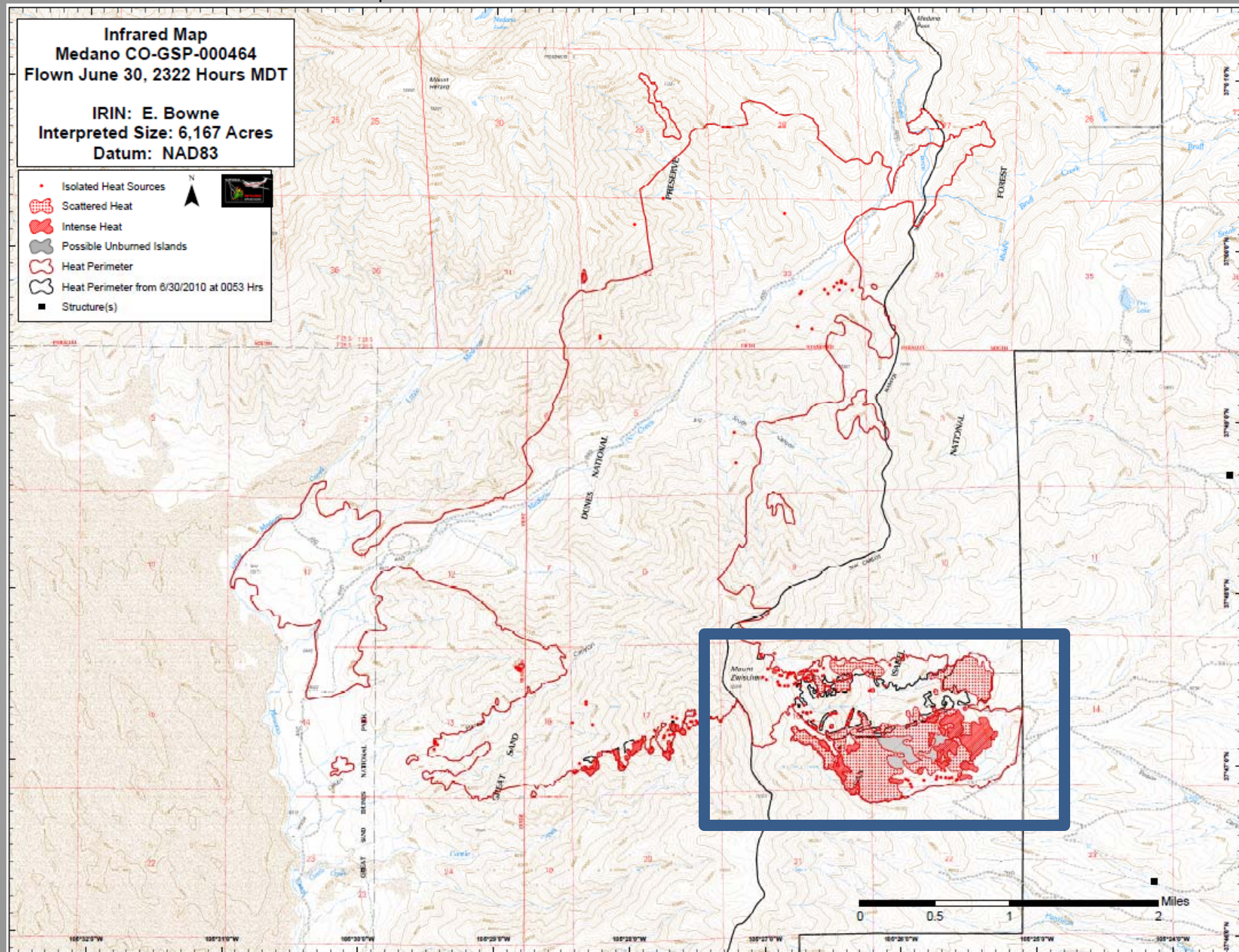
- **Some issues with IR:**

- Timeliness – usually only available **after** the team has been ordered.
- Need to gather intel for team as they are enroute. How about proactively collecting IR data at onset of larger fires?
- Availability to smaller fires – if fire does not rank high enough in national priorities then IR is not available. Since this resource is being used more and more, there needs to be a mechanism to get this type of intel. Other contractors, UAVs, etc.
- Quite a few people are involved in ordering IR – GISS, SITL, Plans, dispatch, IRIN desk, etc. Any way to make this easier?

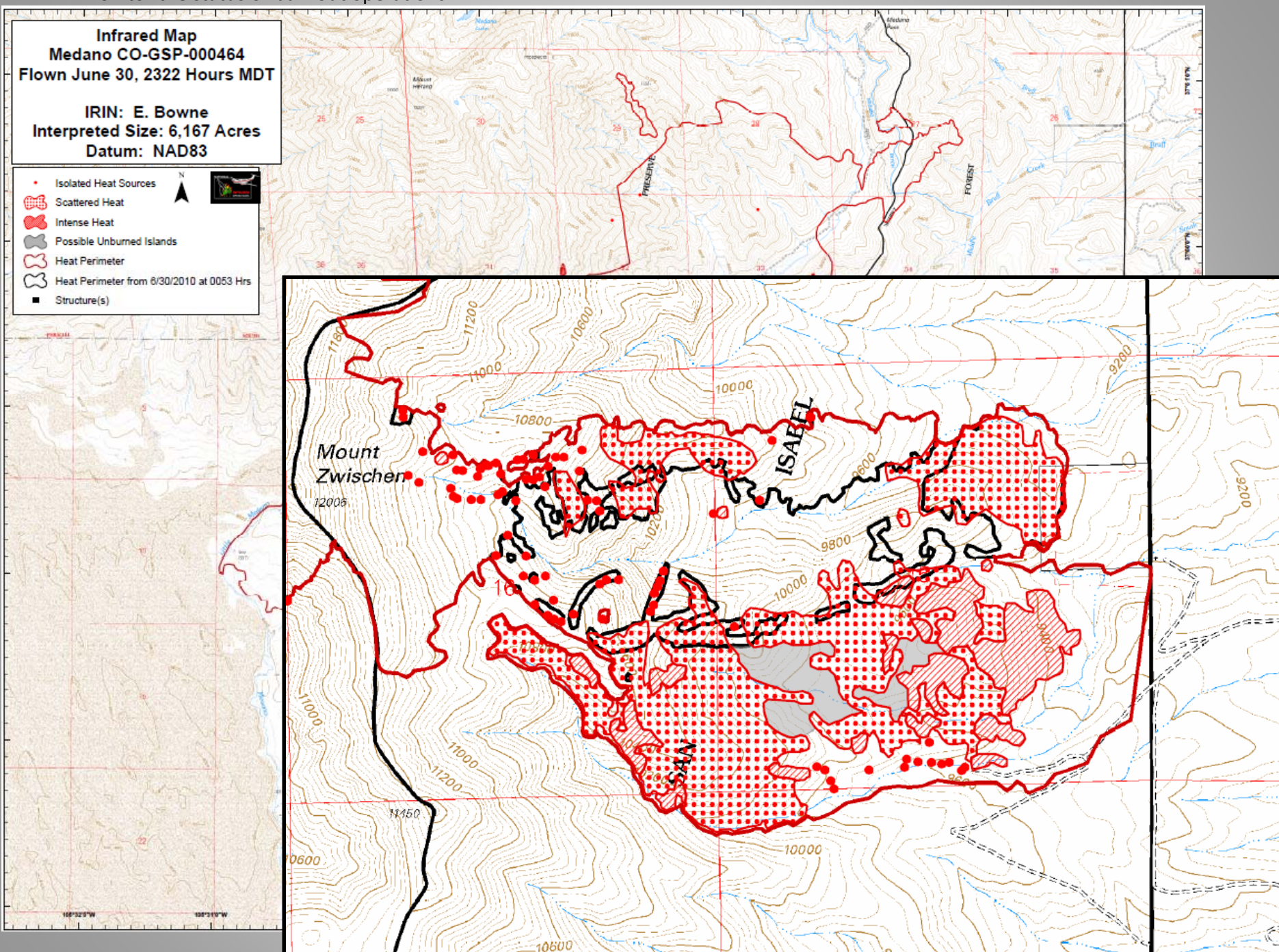
IR map with ownership patterns – who to involve in fire planning, acres by agency, etc.



Monitor the status of burnout operations



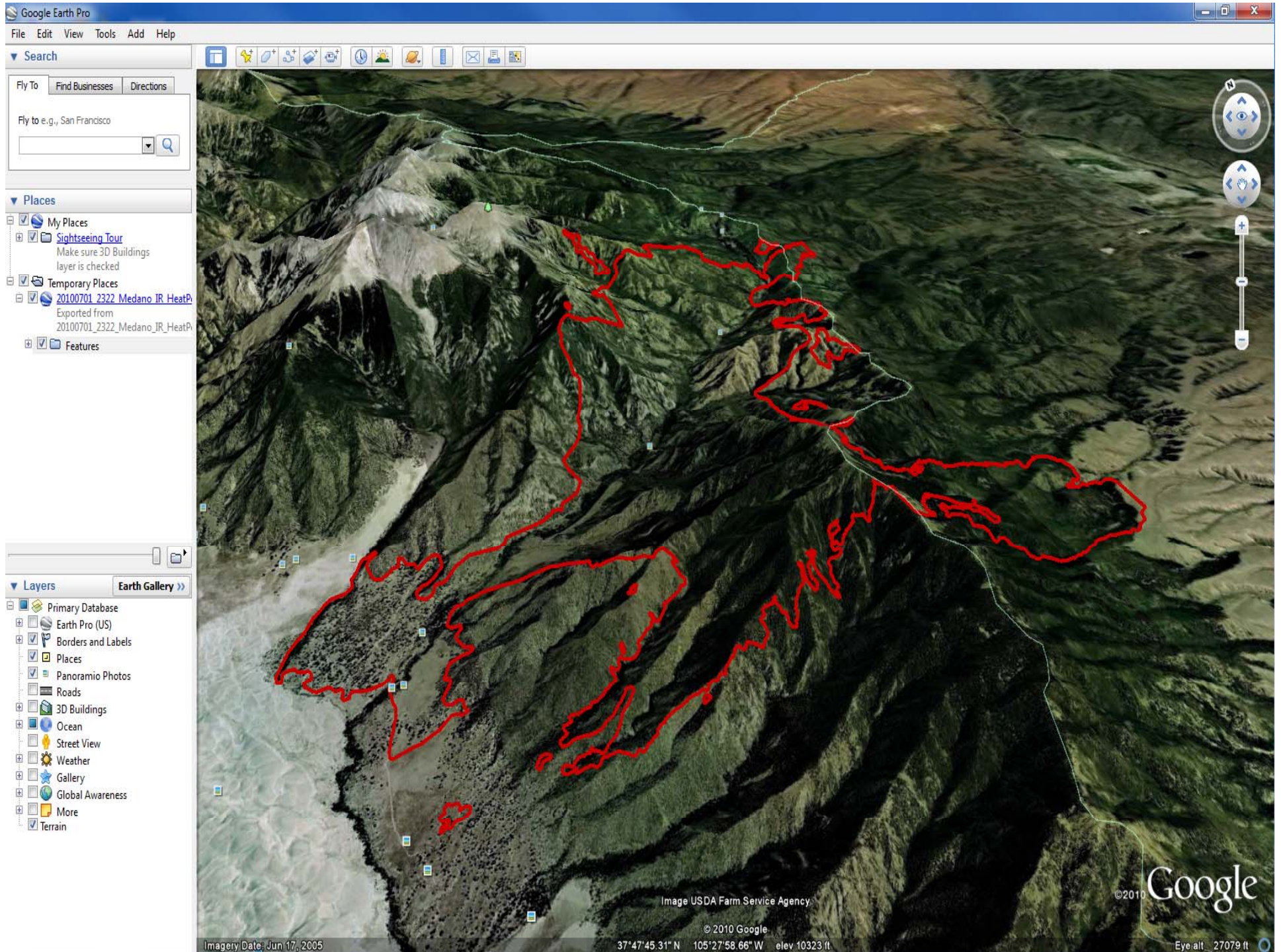
Monitor the status of burnout operations



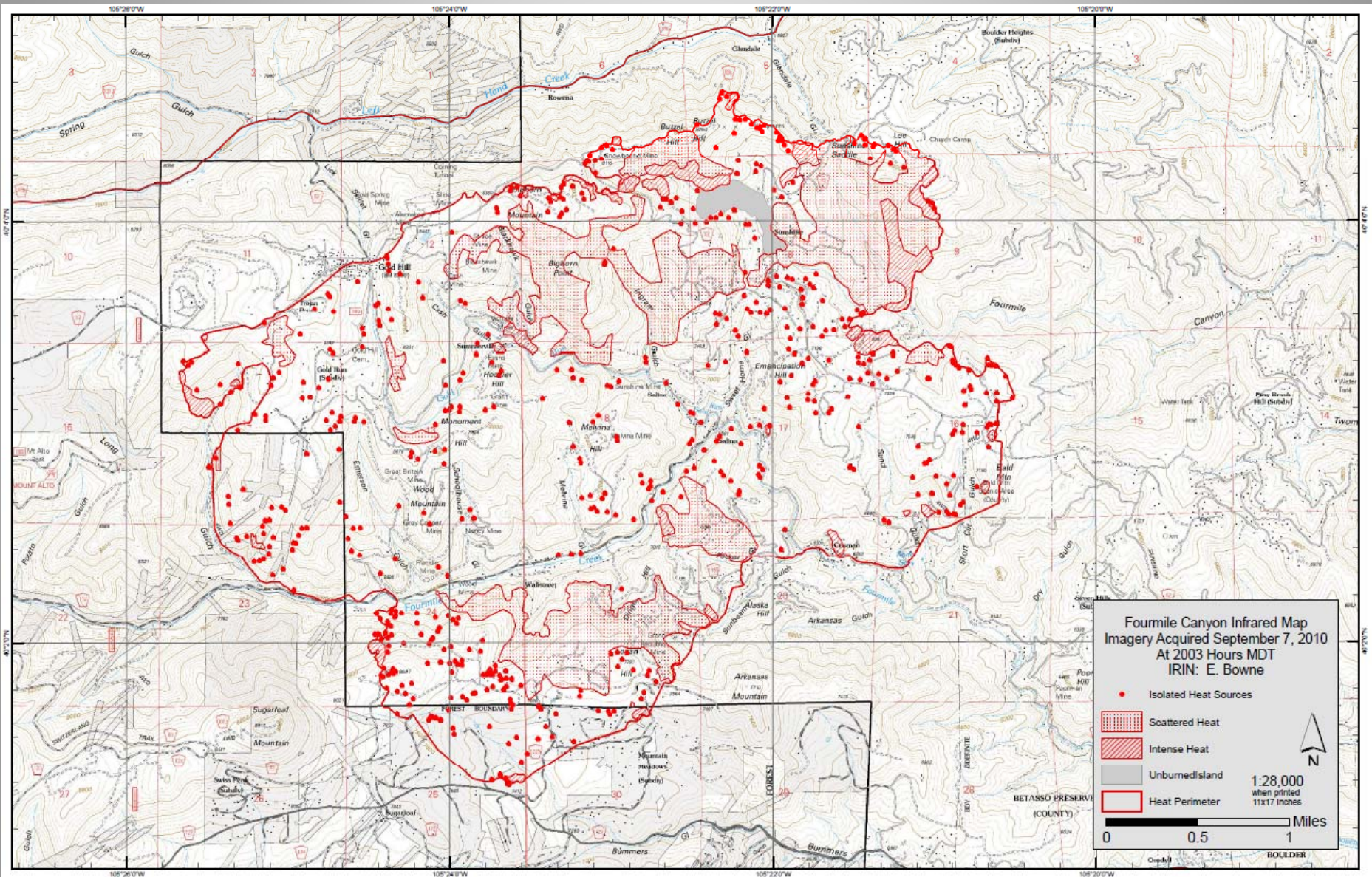
Excellent products from IRINs – Daily log, KML files, PDF maps, etc.

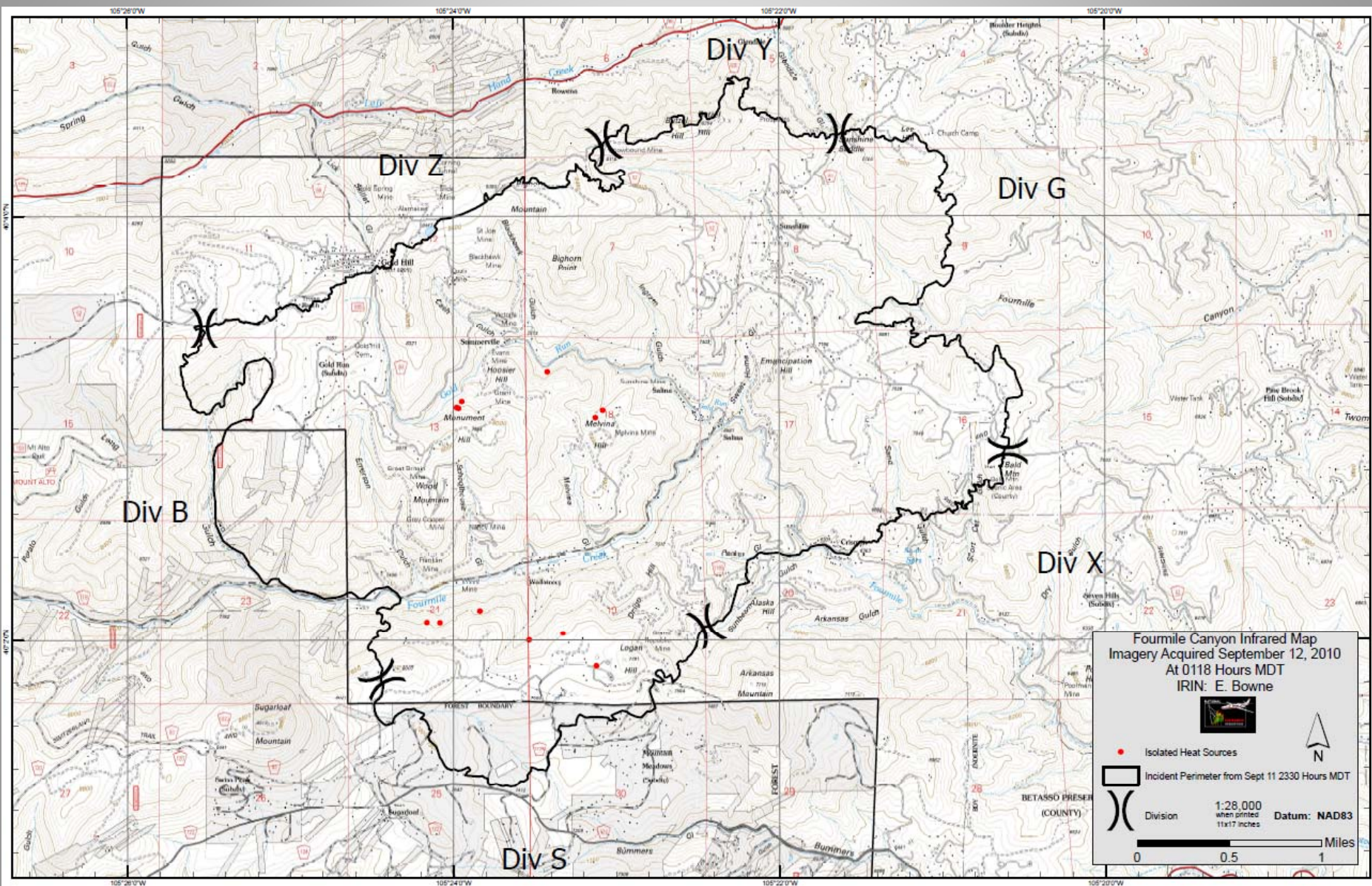
INFRARED INTERPRETER'S DAILY LOG			
Incident Name: Medano	IR Interpreter(s): Elise Bowne	Local Dispatch Phone: 719-553-1600	Interpreted Size: 6167 acres Growth last period: 574 acres
Flight Time: 2322 MDT	Interpreter(s) location: USFS Region 2 RO	Regional Coordinator: NA	National Coordinator: NA
Flight Date: June 30, 2010	Interpreter(s) Phone: 303-275-5209/303-517-7510	Regional Coord. Phone:	National Coord. Phone:
Ordered By: Rich Sterry/SITL	Order Number: A-37	Aircraft/Scanner System: 144Z/Phoenix	Pilots/Techs: Johnson/Boyce/Kazimir
IRIN Comments on imagery: Imagery was clear, georectification was off, more in some places than in others		Weather at time of flight: Clear	Flight Objective: Map perimeter, heat sources
Date and Time Imagery Received by Interpreter: 6/30/2010 2350 MDT		Type of media for final product: 5 Shapefiles, maps(.pdf format), IRIN Log	
Date and Time Imagery Delivered to Incident: 7/01/2010 0530 MDT		Electronic file sent to: ftp://ftp.nifc.gov/Incident_Specific_Data/Medano/IR/20100701/	
Comments /notes on tonight's mission and this interpretation: <p>Most of the heat detected on the incident tonight was again on the southern portion of the incident.</p> <p>Lots of heat in the area east of Mount Zwischen where burnout operations have been taking place. Although detected between the northernmost and southernmost portions of the burnout in this area, the area was in the heat perimeter tonight, as it appeared to be completely surrounded by heat. If this area has not actually burned, heat there in the future. Also included in the heat perimeter in the new area of heat from the burnout on islands that appeared not to have burned yet. They were mapped separately as possible unburned islands and appear to go all the way to the Forest boundary to the east in this area.</p> <p>There is more heat in the Castle Creek drainage tonight, with a number of areas of intense heat, both when backing down the hill and also a couple of areas where it has made some runs up ridges within the drainage. There were a few isolated heat sources detected in the bottom of Horse Canyon tonight, in the same area where heat has been detected the last two nights.</p> <p>A few isolated heat sources were detected on the isolated piece of heat perimeter on the NW side of the Horse Canyon, in section 13, very NE corner.</p> <p>There were a few isolated heat sources in the north central part of the incident, on slopes around Medano Creek. The area of intense heat near the top of the ridge between Medano Creek and Little Medano Creek, section 32, was detected tonight. It appears to be on the west facing slope, toward Little Medano Creek.</p> <p>Also one area of intense heat just south of that area, on the section line between sections 32 and 5.</p> <p>A few isolated heat sources were detected in other parts of the incident also. One is outside the heat perimeter, but it is in the area where the heat perimeter was estimated and may not be a concern.</p> <p>Any feedback on accuracy or other issues would be appreciated.</p>			





Field ready products





Objectives

- Compare two fires that were under different strategic requirements and delegated assignment.
- Speak to the nuances of the available IR product that allowed Team A to:
 - Communicate situation
 - Plan
 - Assign
 - Validate
 - Others????

Thank you for your great products and assistance for the past years!



Four Mile Canyon



Medano