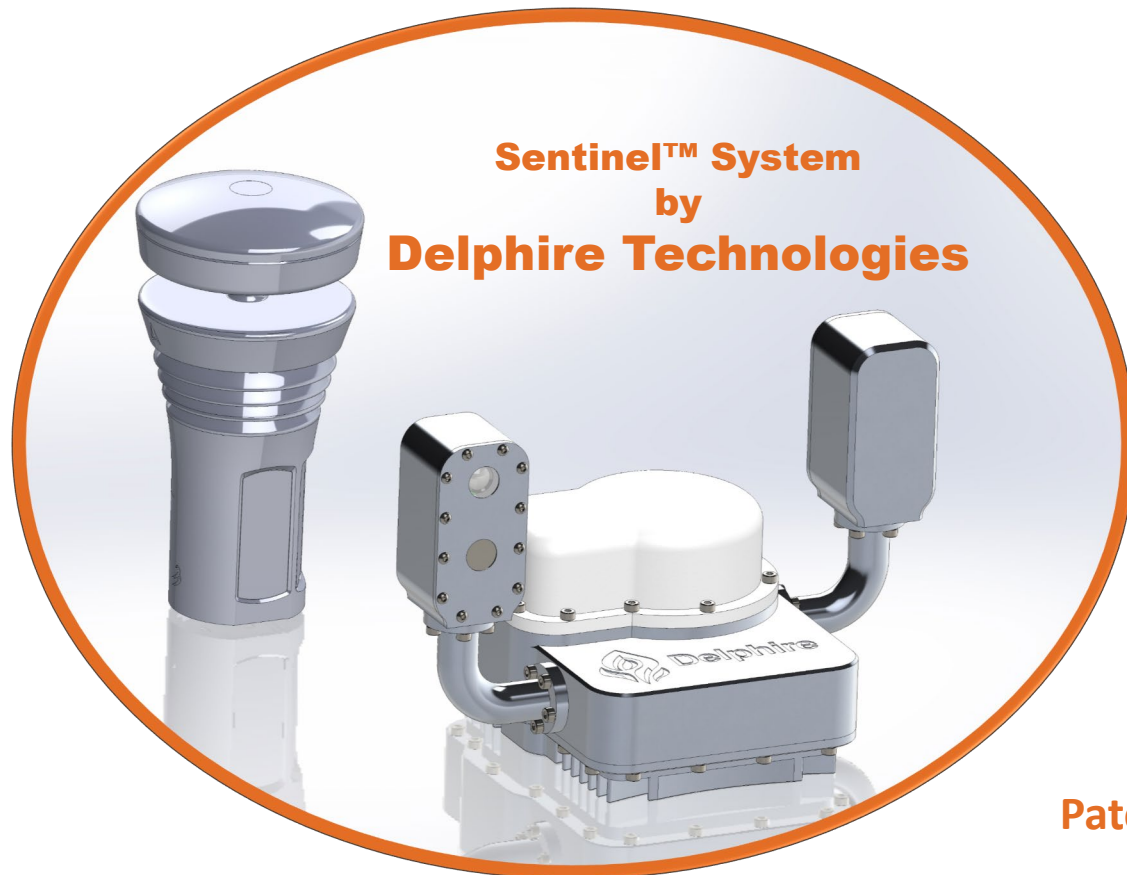
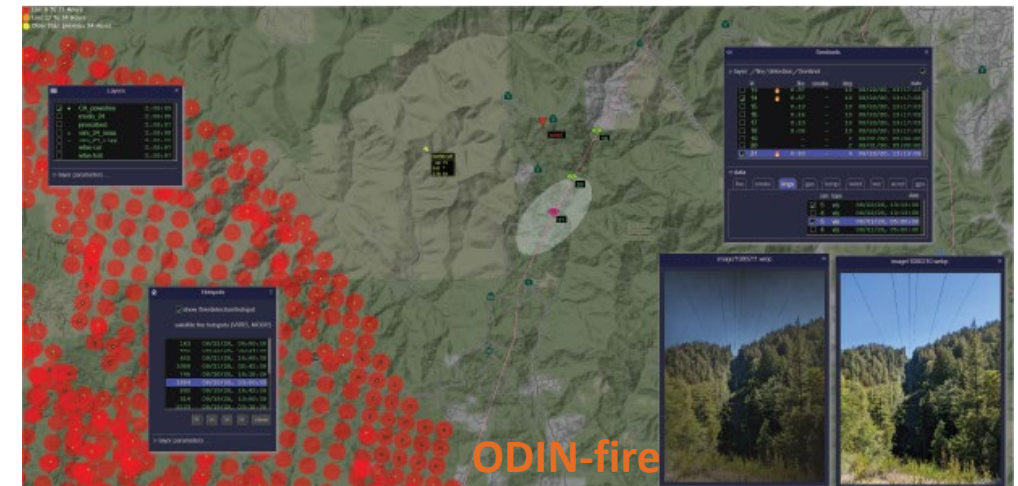


Wildfire AI: Real-Time Detection Powered by AI



Patent Pending



Gilberto DeSalvo, PhD
Delphire Inc
gdesalvo@delphiretech.com
626-399-7019

This material is based upon work supported by the U.S.
Department of Energy, Office of Electricity, under
Award Number DE-SC0021807.

Peter Mehlitz
KBR/NASA Ames Research Center
peter.c.mehlitz@nasa.gov



Swift, accurate alerts that enable an effective and informed response.

Current Standard



Detects Smoke Plumes
General Location
Measured in Hours



Wildfire AI



Detects Ignitions
Specific Location
Measured in Minutes

Visual Confirmation. In Seconds. From Anywhere.



Wildfire AI Sentinel



Multiple Sensors +
AI Technology
+GPS

Satellite
Communication

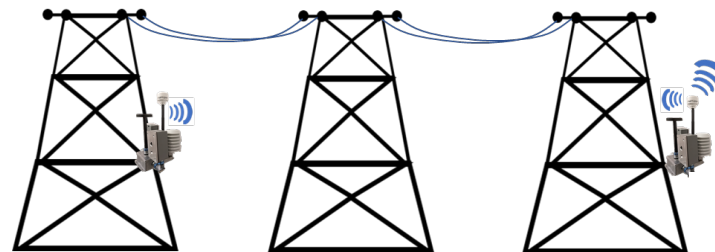
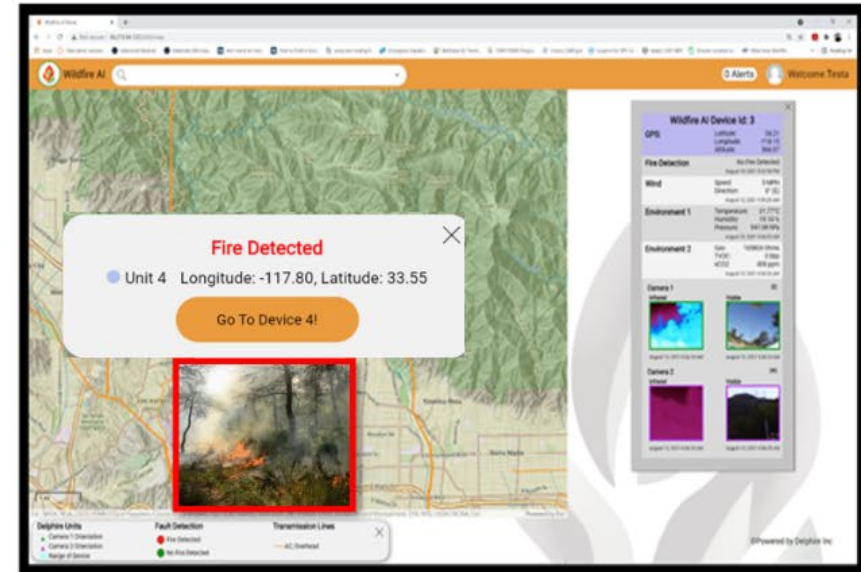
Power



Instant
Update



Wildfire AI Web Portal



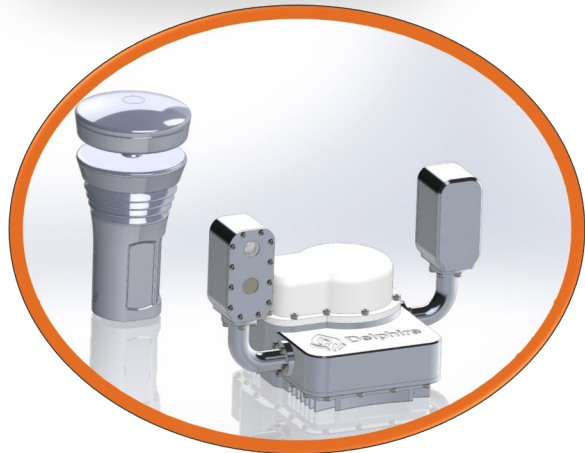
Power Lines

Smart Alerts with Actionable Sensor Data

Enable a Single Person to Monitor Thousands of Units.



ENVIRONMENT



AI PROCESSING ON SENTINEL



DATA REPORT – ODIN-fire

Dynamic real time data &
triggers external alerts.



PUSH NOTIFICATIONS

Early Wildfire Ignition Detection, Visual Confirmation and Root Cause Analysis

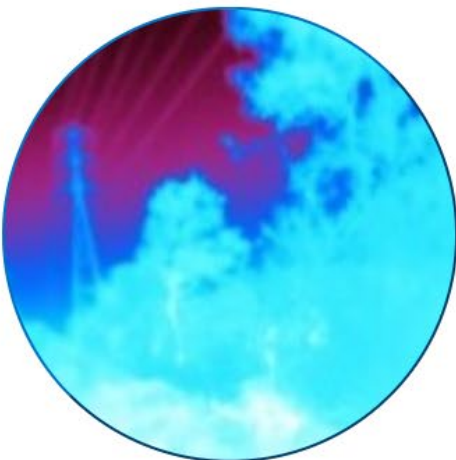
Detect Fires (Visual)



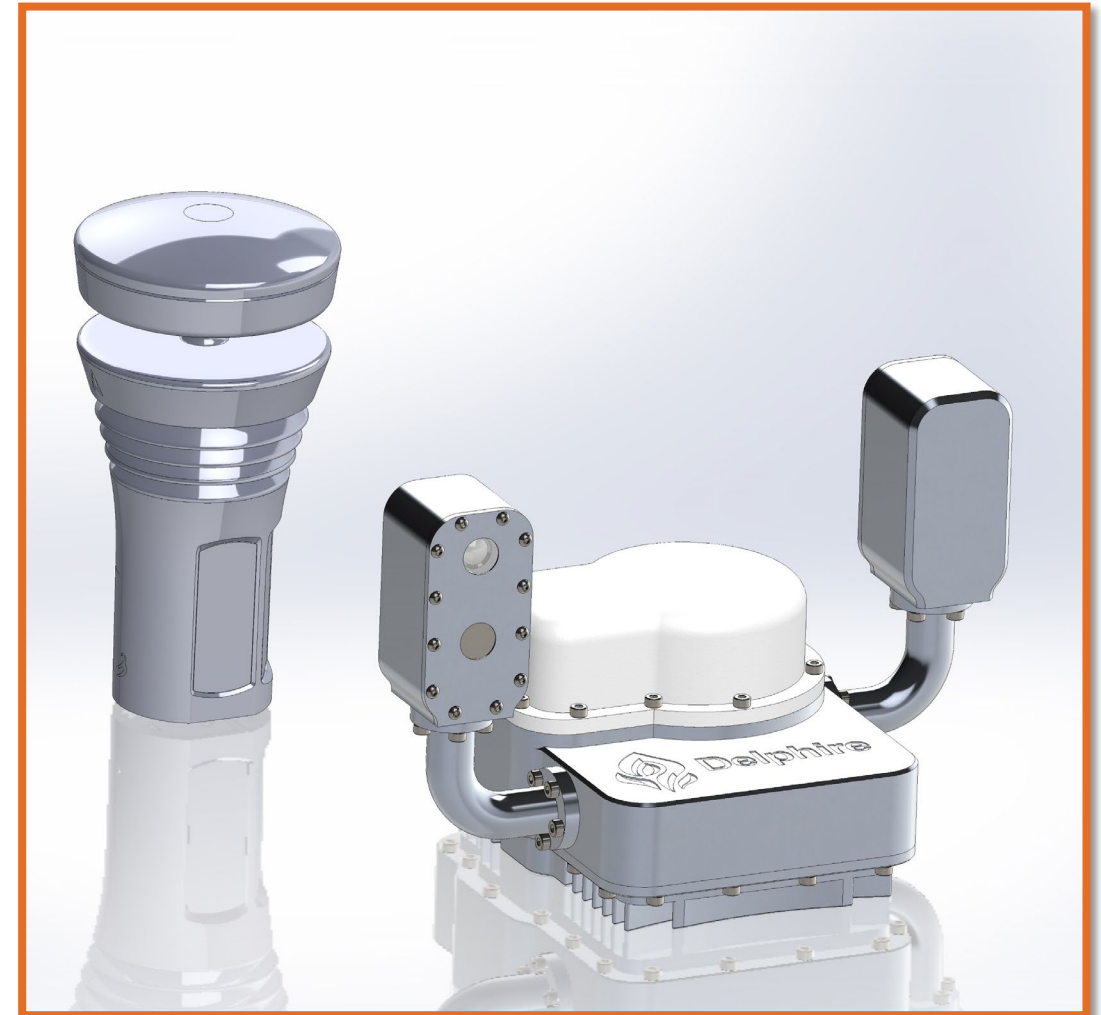
Detect Smoke (Visual)



Detect Ignitions (Infrared)



Detect Smoke (Chemical)



Sentinel™ System Delphire 5

Multi-Sensor Devices for ACTUAL and VISUALLY CONFIRMED Fire Detection.



Data Communication



Anemometer



Cameras



Ambient Sensors



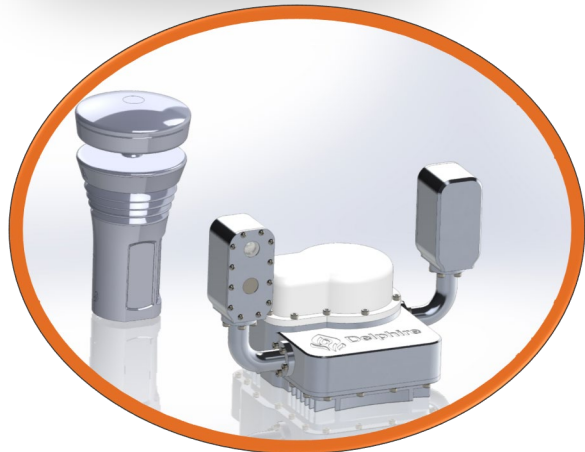
On-Board Processor

Smart Alerts with Actionable Sensor Data

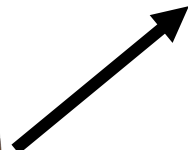
Enable a Single Person to Monitor Thousands of Units.



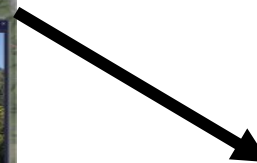
Upload Test Image



AI PROCESSING ON SENTINEL



DATA REPORT – ODIN-fire



PUSH NOTIFICATIONS

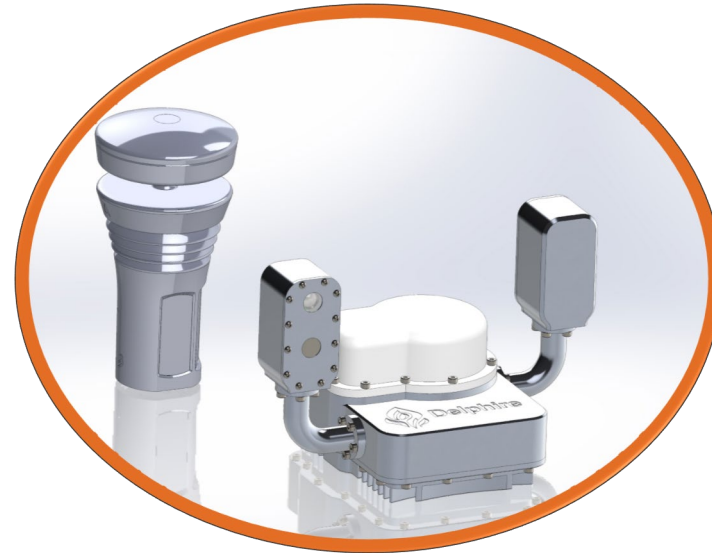
Overwatch System

Spot fires and enable your community to respond.

+

**Remote Industrial Automation.
From Anywhere.**

Cellular + Satellite Communications onboard.





ODIN-fire: Open-source Data Integration framework for wildland-fire management

- Framework for **real-time importing & processing** of multiple data sources into a **single consistent view**.
 - Solving the “15-browser tab problem”.
- Today’s focus:
 - Overall functionality &
 - Showcase data diversity/scope.

**Stakeholder can customize and/or
extend data, views and functions.**

- Example: CZU fire real time integration (08/16/2020).



Delphire Team



Gilberto DeSalvo
CEO

Technical Advisory Board

Business Advisory Board

Bob Musselman
Technology & Manufacturing



Jerry Schuman
IoT & Grid AI



Randy Lyle
Ret. SD&E Fire Coordinator



Haochen Pi, MS
AI Software



Dustin Krogstad, MS
PCB Consultant



Victor Hui
Intern



Emre Onder
Business Strategy



David Horne, PhD
Marketing Strategy



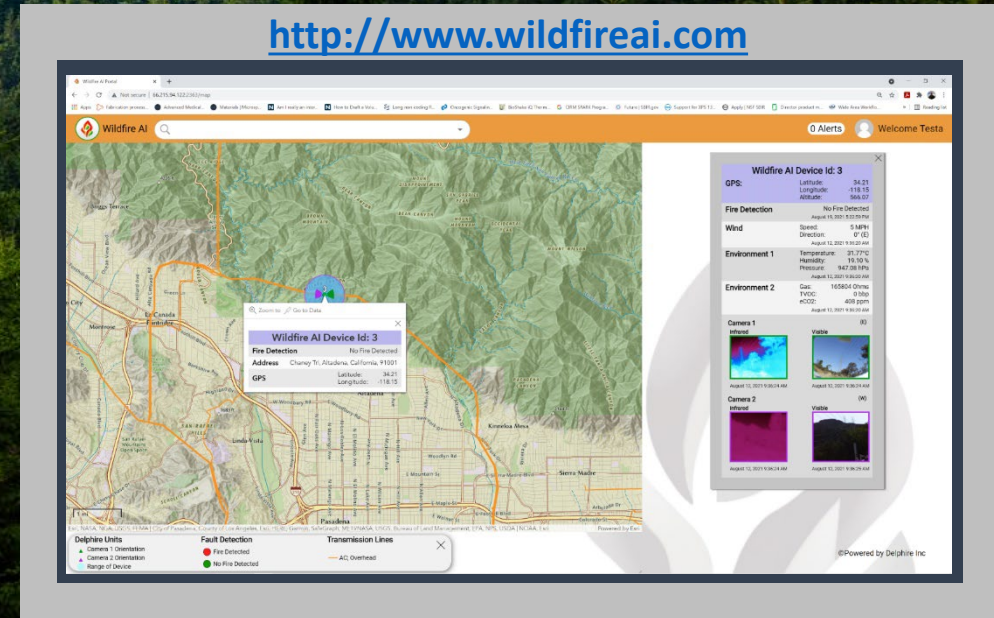
Sue Malone
Funding Strategy



Jeremy Tole
Supply Chain



<http://www.wildfireai.com>



Delphire Inc
Gilberto DeSalvo, PhD
gdesalvo@delphiretech.com
626-399-7019

Peter Mehlitz
ODIN-fire
KBR/NASA Ames Research Center
peter.c.mehlitz@nasa.gov

This material is based upon work supported by the U.S. Department of Energy, Office of Electricity, under Award Number DE-SC0021807.

