

# Papoose Fire

Salmon-Challis National Forest  
Frank Church River of No Return  
Wilderness



# Lightning-caused 7/8/2013

## Escaped Initial Attack 7/9/2013

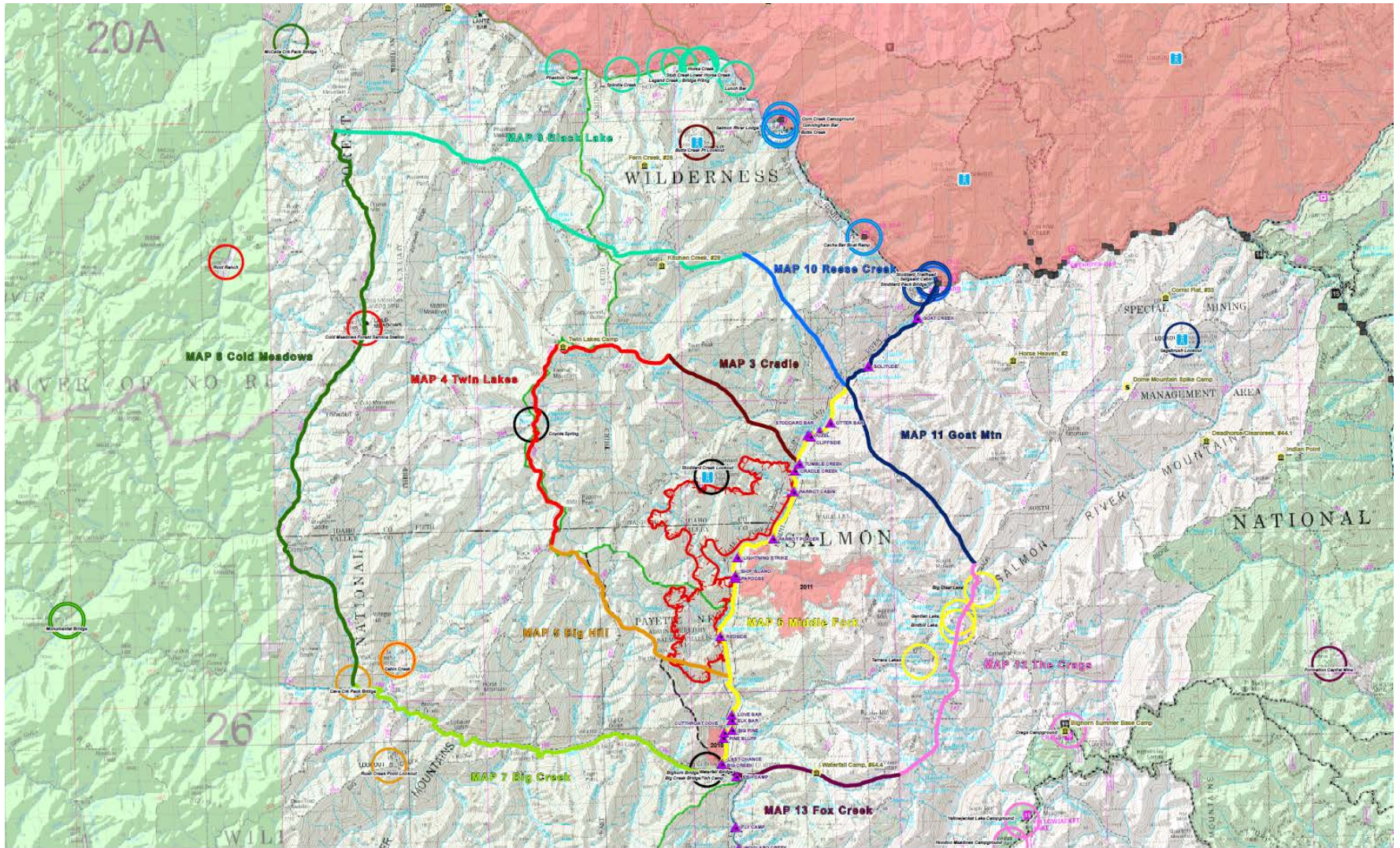








# Long-Term Plan with MAPs





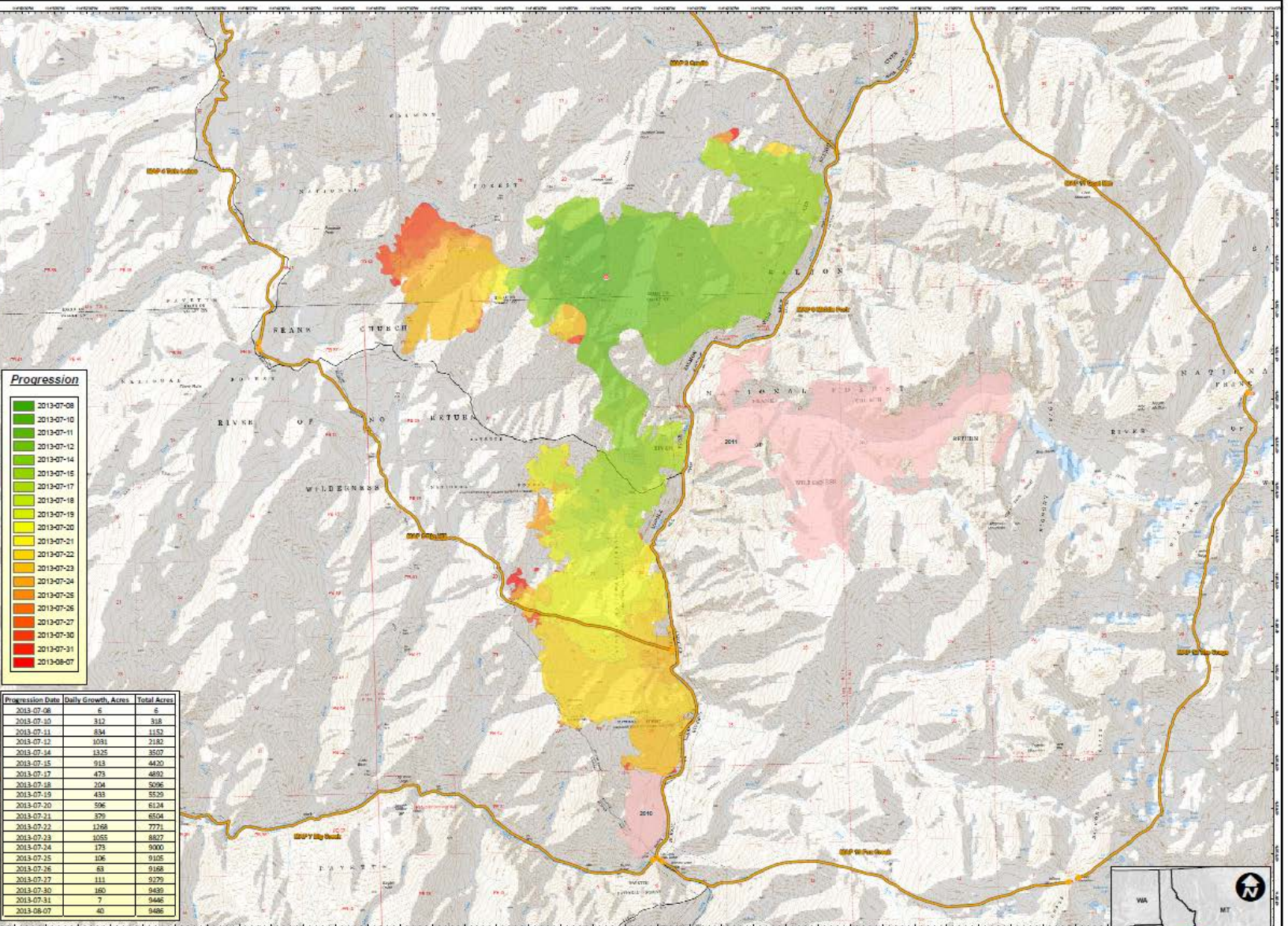
# Values for Point Protection



# University of Idaho Taylor Ranch







# Papoose Fire

IDSCF - 13120

Progression Map - August 7, 2013

Management Action Points  
Fire History 2008-2012





# Middle Fork of the Salmon River















## Key Points

- IR is a critical tool for staying two steps ahead in managing point-protection fires.
- Information provided by IR is key for making decisions that affect outfitters and guides, recreationists, research activities, etc.
- IR is cost effective.
- IR is good Risk Management: less flights, less commitment of resources.
- Not getting IR affects daily operational plans.





