

The RECOVER Post-fire Planning Project

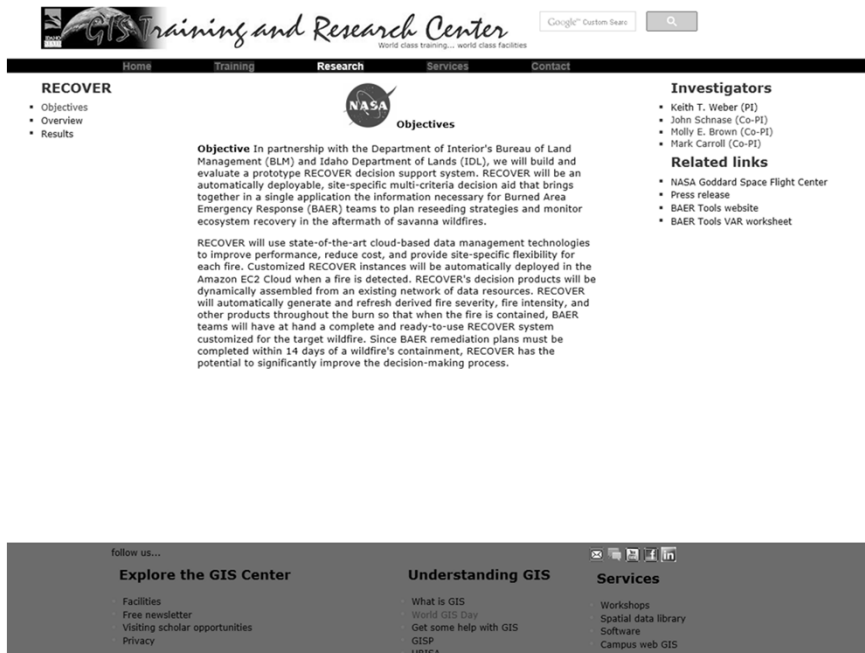
Keith T. Weber, GISP

GIS Director, ISU

Schnase, Mark Carroll, Roger Gill, and
Molly Brown



Overview



<http://giscenter.isu.edu>

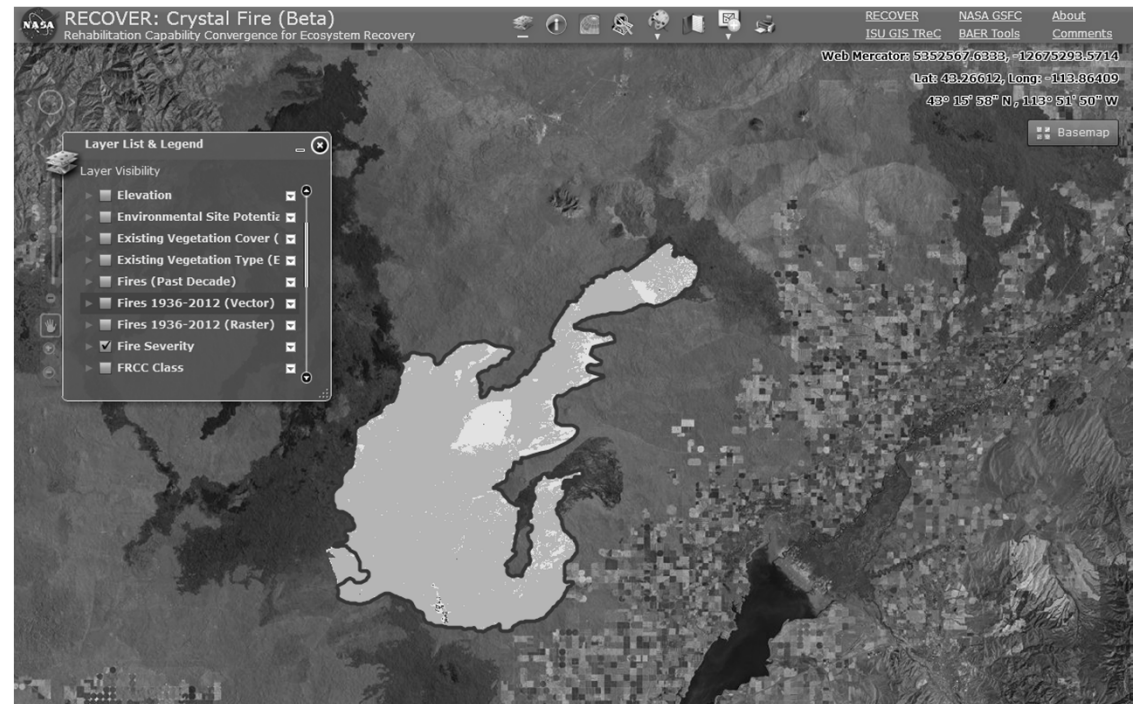
- RECOVER =
Rehabilitation Capability
Convergence for
Ecosystem Recovery
- Decision Support System
(DSS)
 - Wildland fire managers,
 - BAER teams
 - ESR teams

Goals

- To improve landscape rehabilitation following wildfire by improving the decision *process*
 - All data in one place →
 - More/better information →
 - Better informed decisions
- How? Leveraging cloud-based, web services to significantly reduce development, deployment, and operational support costs

RECOVER is running now...

- 2013 fire season-
5 wildfire sites
 - Mabey Canyon
 - 2 ½ mile
 - State-line
 - Pony Creek
 - Incendiary Creek



RECOVER

- Uses:
 - Best-available data
 - Best-available technologies
- Provides:
 - *Near real-time*¹ rapid, automated data assembly

1- response time 35 minutes

Future of RECOVER

- Continue client-centric approach
- Incorporate improved geospatial data
 - e.g., SMAP and Suomi NPP
- Offer mobile solutions
- Live, in-the-field data collection¹



1- Using Collector for ArcGIS



Acknowledgements...

Questions?



- Operational Partners

