



Wild (Bush) Fire near Sydney, Australia

Focus period: 16 – 28 October 2013



NSW GOVERNMENT **NSW RURAL FIRE SERVICE**

ask government | login | register | contact us | search

Home > Current Operations > Current Fires and Incidents

Current Fires and Incidents

Map of current Fires and Incidents

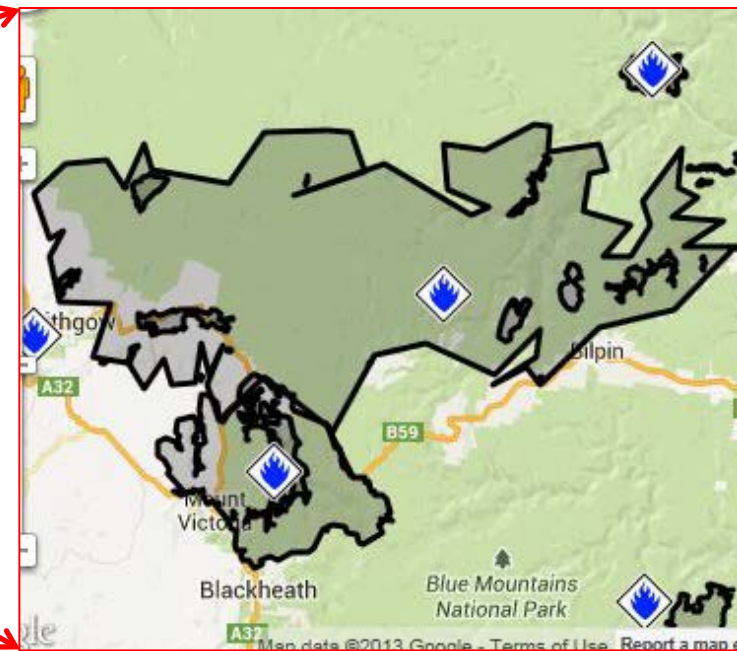
Go to (suburb or postcode):

Legend:

- Emergency Warning
- Watch and Act
- Advice
- Not applicable

Incidents:

- Howes Swamp
- State Mine Fire
- Pa Ling Yard Loop
- Clifton Downs
- Madle Street
- Linksvie Rd.
- Springwood
- Mt York Rd. Mt Victoria
- Clews
- Bald Knob
- Swydir Highway Moree
- Copeton Dam
- Long Gully Rd
- Kvola Road Fire
- 207199 (Unmapped Incident)



maps courtesy of North Sales Wales Rural Rural Fire Service

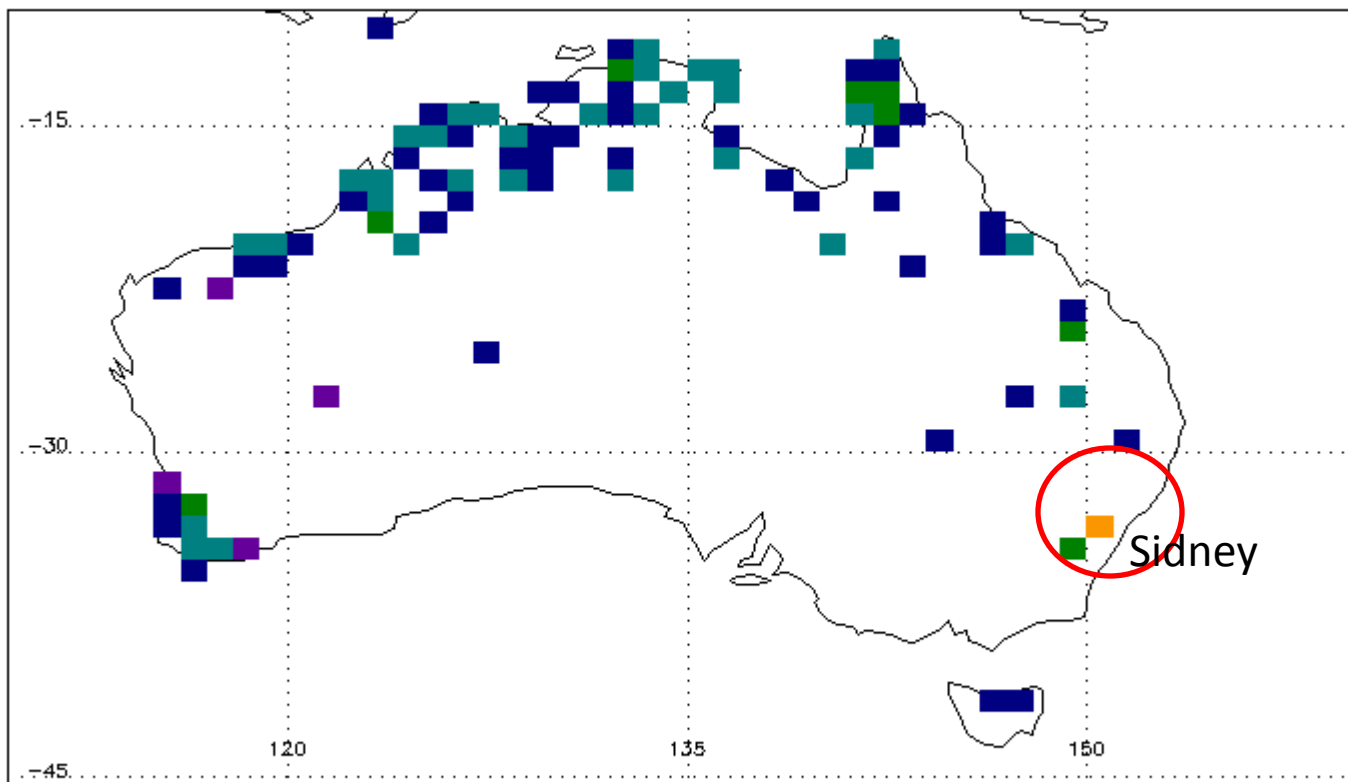


Loop: NAAPS- FLAMBE 6 hour Emissions

16 – 30 October 2013



Emissions Total= 6.478×10^6 kg log 10 (emitted per 6 hrs)



Australia

Wed Oct 30 17:13:32 2013 UTC

NRL/Monterey Aerosol Modeling

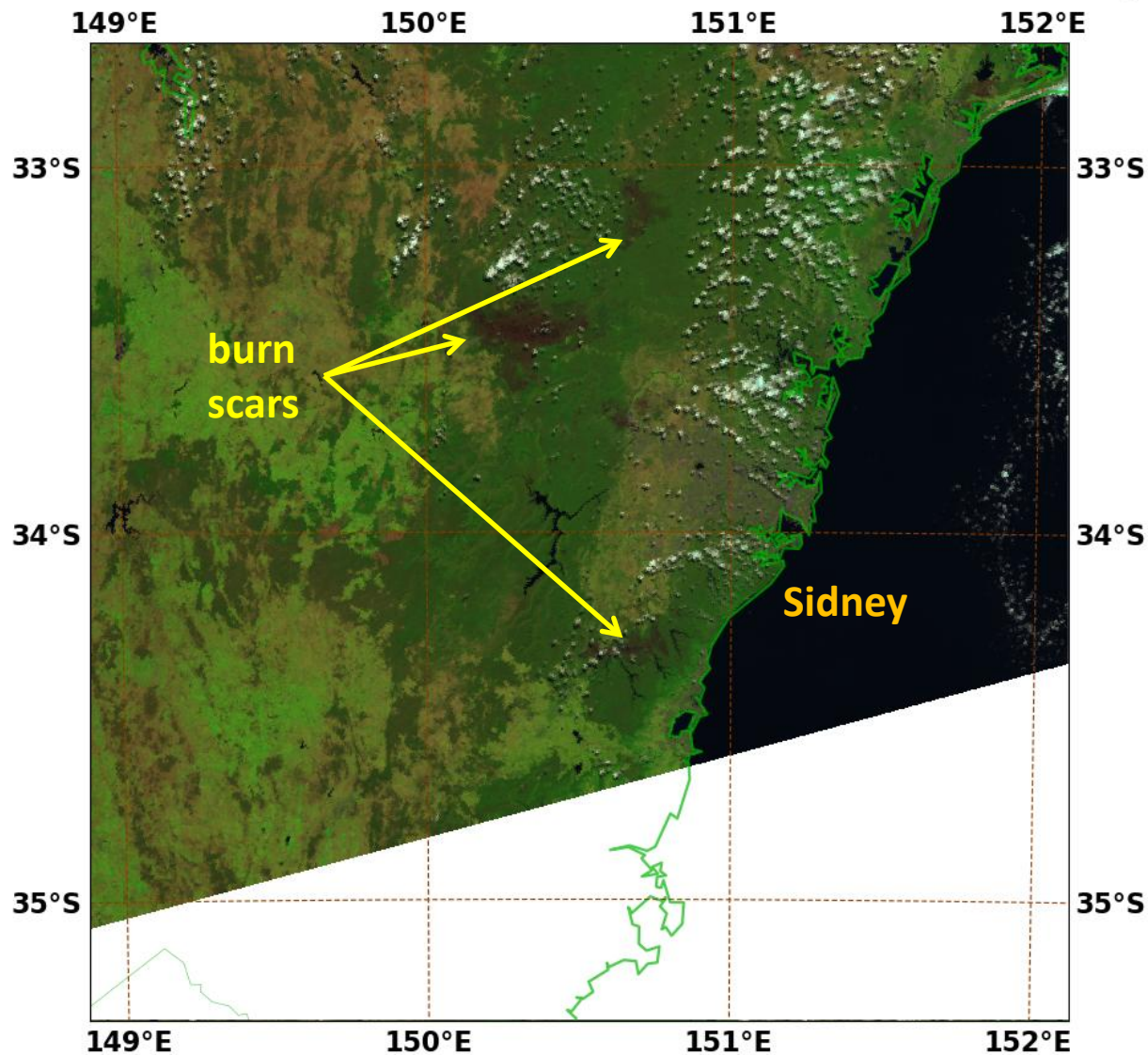


VIIRS Natural Color

16 – 30 October

light blue = smoke, red = hot spots, dark brown = burn scars

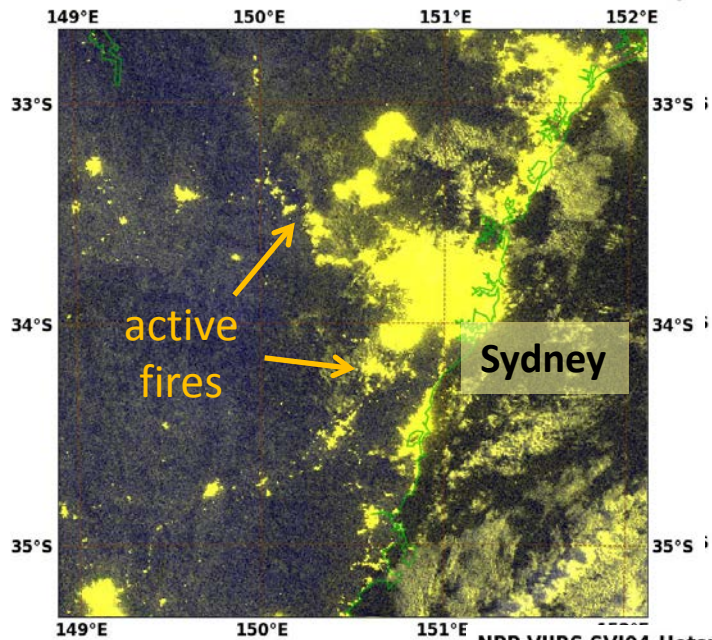
NPP VIIRS Natural-Color 2013/10/30 04:21:21Z NRL-Monterey



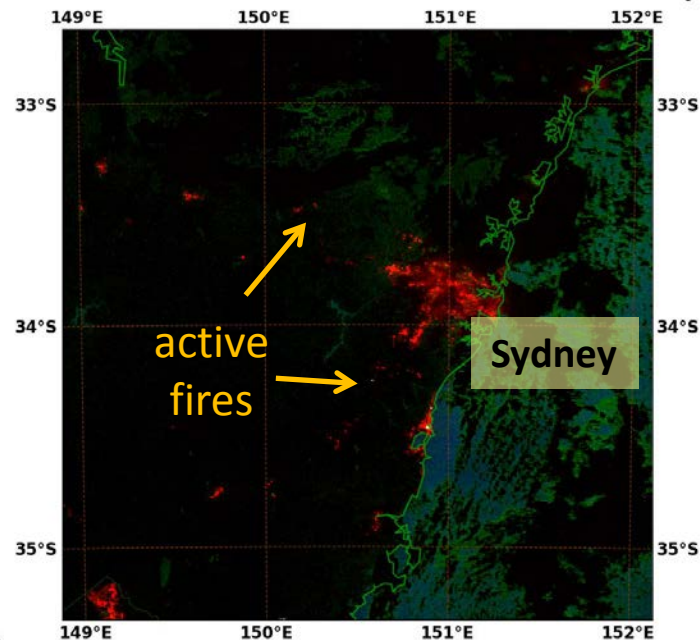


VIIRS Nighttime Views 16 – 29 October 2013

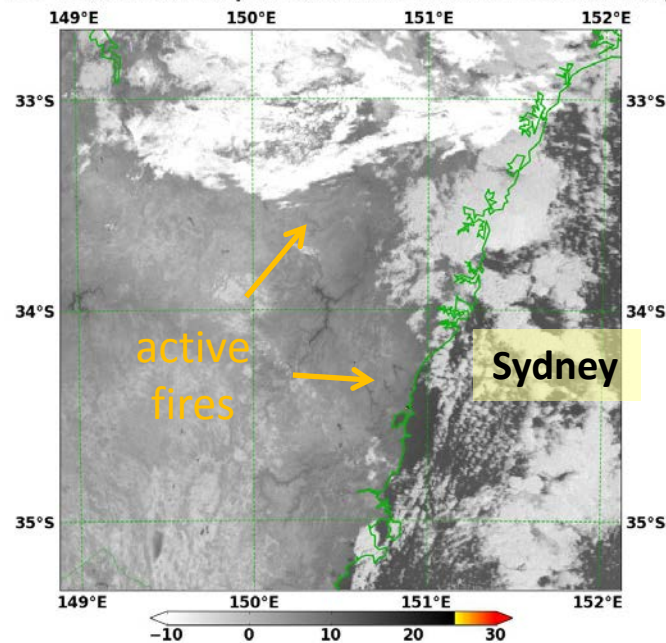
NPP VIIRS Lunar-Ref-IR 2013/10/26 15:14:51Z NRL-Monterey



NPP VIIRS PointSources 2013/10/29 15:59:04Z NRL-Monterey



NPP VIIRS SVI04-Hotspots 2013/10/29 15:59:04Z

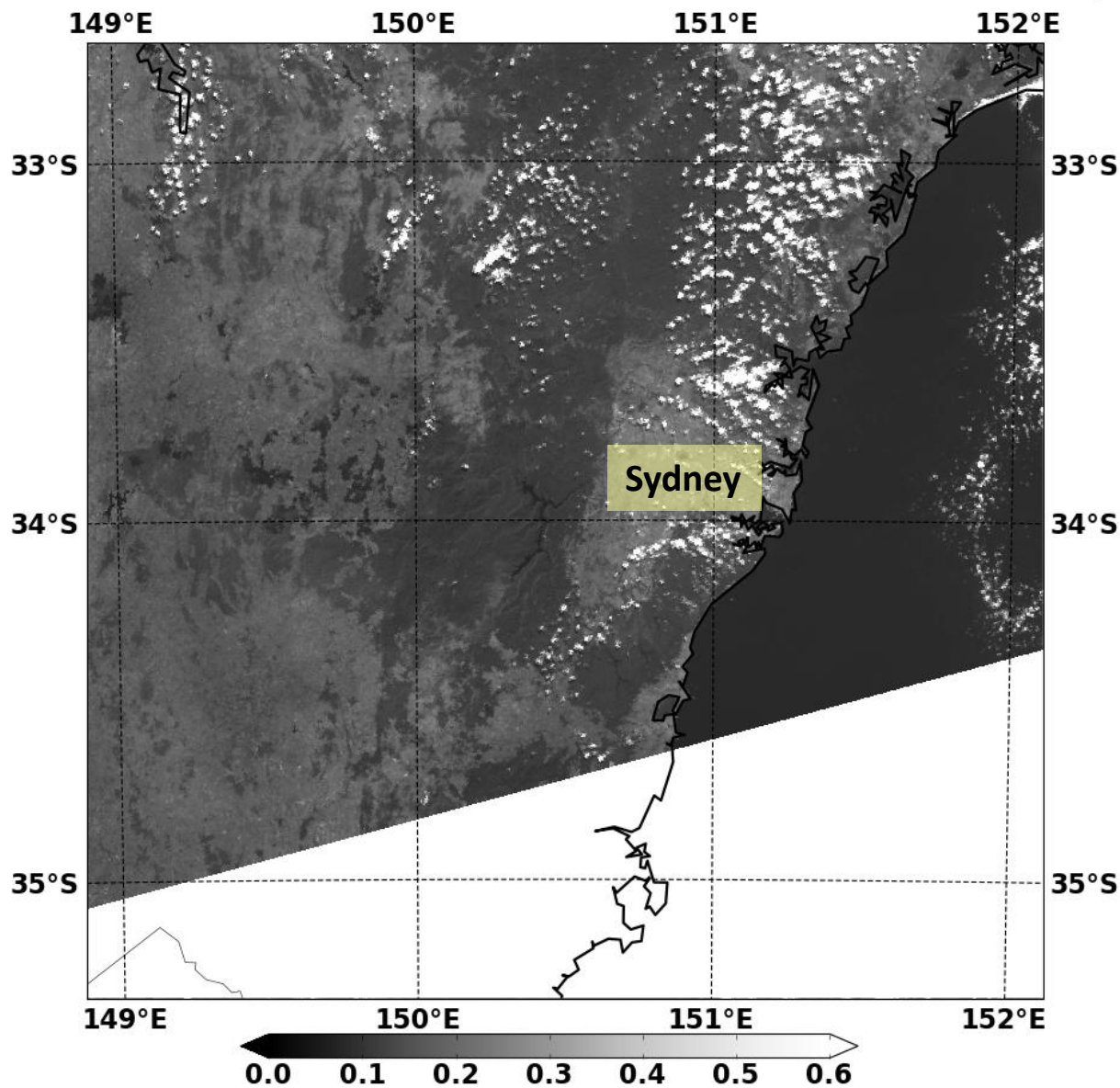




VIIRS Visible

16 – 30 October 2013

NPP VIIRS Visible-Hires 2013/10/30 04:21:21Z NRL-Monterey



Extra Slides



VIIRS True Color

Point Sources: easily identified

